



303 Mimosa St  
Pelahatchie, MS 39145  
(601) 669-8280

## Mosquito Control Report July 2024

Mr. Brian Grantham  
Emergency Management Director  
Rankin County  
601 Marquette Road  
Brandon, MS 39042

Mr. Brian Grantham,

As outlined in the Contract Document Specifications for Mosquito Control in Rankin County, MS, I am submitting the Monthly Mosquito Control Report for July 2024.

Sincerely,

Scott H. Williams, Sr.  
Contract Manager  
Greater Jackson Metro Area, MS

In July 2024, Rankin County, Mississippi, saw a comprehensive mosquito control effort led by Vector Disease Control International (VDCI). This narrative details the significant activities, data collection, and results as part of the ongoing mosquito surveillance and control program to protect public health from mosquito-borne diseases.

## Overview of Mosquito Control Operations

The mosquito control efforts for July 2024 were thorough and consistent, as reflected in the monthly report. The operations included a combination of site investigations, treatments, and the use of various traps to monitor mosquito populations across Rankin County. The program's primary goal was to reduce the risk of mosquito-borne diseases, such as West Nile virus, by targeting both larval and adult mosquito populations. For July 2024 we covered 910 spray miles, which equals out to 33,113 spray acres treated with adulticide formulation by truck ULV spray.

### **\*\*Site Investigations and Treatments\*\***

During the month, the team conducted a total of 41 site investigations, with 18 of these sites found to be wet, accounting for 43.9% of the total sites inspected. The presence of water is crucial for mosquito breeding, and the data indicate that nearly half of the sites had conditions conducive to mosquito breeding. Every wet site was treated, with the team ensuring a 100% treatment rate.

The treatments involved using larvicides to eliminate mosquito larvae before they could mature into adults. This preventive approach is critical in controlling mosquito populations and reducing the likelihood of disease transmission.

### **#### Surveillance and Data Collection**

#### **\*\*Adult Mosquito Surveillance\*\***

The surveillance of adult mosquitoes was conducted using CDC light traps and gravid traps, strategically placed across various locations in Rankin County. These traps were essential in monitoring the mosquito population, particularly species known to carry diseases.

The report details the mosquito collections from multiple sites, with the traps set at regular intervals throughout the month. The data collected from these traps provided valuable insights into the mosquito species present and their abundance in different areas.

For instance, the report highlights that at the 833 Bobby Peede Street location, a significant number of mosquitoes were collected, with a total of 63 mosquitoes over two collection dates, averaging 31.5 mosquitoes per trap. Most of these were *Culex Quinquefasciatus*, a species known to be a primary vector for the West Nile virus.

Other locations, such as 200 Cemetery Road and 188 Richmond Drive, also reported high mosquito counts, emphasizing the need for continued and targeted control measures in these areas.

#### **\*\*Gravid Traps\*\***

Gravid traps were used to capture mosquitoes that had already fed and were ready to lay eggs. These traps are particularly effective in targeting *Culex* species, which are more likely to be carrying diseases. The data from the gravid traps provided an additional layer of information, helping the control team to identify hotspots and adjust their strategies accordingly.

For example, the report from 358 Sand Hill Road indicated an exceptionally high number of mosquitoes captured, with a total of 103 mosquitoes over two days, averaging 51.5 per trap. This information was crucial in directing further control measures to this area, highlighting the effectiveness of the surveillance program.

#### **#### Community Engagement and Public Health Impact**

While the primary focus of the mosquito control program was on direct interventions, the report also emphasized the importance of community engagement. Educating the public about mosquito prevention and encouraging them to report potential breeding sites were key components of the overall strategy.

Interestingly, the report noted that there were no hotline calls related to mosquito complaints or potential habitats during July 2024. This could indicate that the community was either well-informed or that the control measures were sufficiently effective in minimizing mosquito nuisances.

## **\*\*Conclusion\*\***

The July 2024 mosquito control efforts in Rankin County were marked by a systematic and data-driven approach to managing the mosquito population. The detailed surveillance data collected through site investigations and various trapping methods provided the foundation for targeted control measures, ensuring that the risk of mosquito-borne diseases was minimized.

The comprehensive report reflects the dedication of the control team to public health and safety. By maintaining a high level of vigilance and adapting their strategies based on real-time data, they were able to address mosquito populations effectively, protecting the residents of Rankin County from potential health threats. As mosquito control remains a critical public health function, the efforts documented in this report underscore the importance of continued investment in surveillance, control, and community engagement.



# Weekly Program Summary

Start Date: 07/01/2024    End Date: 07/31/2024

---

## Rankin County

---

### *Larval Mosquito Surveillance and Control Summary*

Total Number of Site Investigations:	41.0
Total Number of Sites Wet:	18.0
Percentage of Sites Wet:	43.9%
Total Number of Site Treatments:	41.0
Percentage of Sites Treated:	100.0%
Total Number of Acres Treated:	9.3

---

### *Mosquito Control Hotline Summary*

Total Number of Hotline Calls:	0.0
Notify/Shutoff Calls:	0.0
Potential Habitat Calls:	0.0
Adult Complaint Calls:	0.0
General Information/Other Calls:	0.0

---

### *Adult Mosquito Control Summary*

Total Number of Miles Sprayed*:	910.7
Total OZ of Adulticide Used:	25,906.1

\* Only includes ULV spray-on mileage (excludes shuts, turn arounds, etc.).

\* Weekly report results are based upon preliminary data and may be subject to change after final seasonal compilation.

# Adult Mosquito Surveillance Report

Start Date: 07/01/2024 End Date: 07/31/2024

## Rankin County

Trap Location	Date Trap Set	Trap Type	Mosquito Species	No. Collected
<b>RC-02 Collections</b>				
316 Greenbriar St, Brandon, MS 39047, USA	07/08/2024	CDC Light Trap	Culex quinquefasciatus	5
			Aedes albopictus	2
			<b>Trap Total</b>	<b>7 (Avg. 7.0)</b>
<b>RC-03 Collections</b>				
203 Lewis Prestage Rd, Lena, MS 39094, USA	07/08/2024	CDC Light Trap	Culex quinquefasciatus	7
			Anopheles quadrimaculatus	2
			<b>Trap Total</b>	<b>9 (Avg. 9.0)</b>
<b>RC-04 Collections</b>				
171 John Hill Rd, Brandon, MS 39047, USA	07/08/2024	CDC Light Trap	Culex quinquefasciatus	5
			Aedes albopictus	1
			<b>Trap Total</b>	<b>6 (Avg. 6.0)</b>
<b>RC-05 Collections</b>				
446 Rehobeth Rd, Pelahatchie, MS 39145, USA	07/08/2024	CDC Light Trap	Culex quinquefasciatus	6
			<b>Trap Total</b>	<b>6 (Avg. 6.0)</b>
<b>RC-06 Collections</b>				
1130 Gerrits Landing , Brandon, MS 39047, USA	07/22/2024	CDC Light Trap	Culex quinquefasciatus	2
			Anopheles quadrimaculatus	1
			Aedes albopictus	2
			<b>Trap Total</b>	<b>5 (Avg. 5.0)</b>
<b>RC-08 Collections</b>				
213 Camelia Trail, Brandon, MS 39047, USA	07/08/2024	CDC Light Trap	Culex quinquefasciatus	4
			Aedes albopictus	1
213 Camelia Trail, Brandon, MS 39047, USA	07/22/2024	CDC Light Trap	Culex quinquefasciatus	4
			Anopheles quadrimaculatus	2
<b>Trap Total</b>	<b>11 (Avg. 5.5)</b>			
<b>RC-09 Collections</b>				
276 Painted Horse Trail, Brandon, MS 39042, USA	07/08/2024	CDC Light Trap	Culex quinquefasciatus	4
			Aedes albopictus	2
276 Painted Horse Trail, Brandon, MS 39042, USA	07/22/2024	CDC Light Trap	Culex quinquefasciatus	6
			Aedes albopictus	4
<b>Trap Total</b>	<b>16 (Avg. 8.0)</b>			
<b>RC-10 Collections</b>				
209 Wexford Ct, Brandon, MS 39047, USA	07/08/2024	CDC Light Trap	Culex quinquefasciatus	6
			Anopheles quadrimaculatus	2
			Aedes albopictus	1
209 Wexford Ct, Brandon, MS 39047, USA	07/22/2024	CDC Light Trap	Culex quinquefasciatus	6
			<b>Trap Total</b>	<b>15 (Avg. 7.5)</b>
<b>RC-11 Collections</b>				
113 Gulde Shiloh Rd, Brandon, MS 39042, USA	07/08/2024	CDC Light Trap	Culex quinquefasciatus	4

Vector Disease Control International  
303 Mimosa Ave.  
Pelahatchie, MS 39145

Trap Location	Date Trap Set	Trap Type	Mosquito Species	No. Collected
113 Gulde Shiloh Rd, Brandon, MS 39042, USA	07/22/2024	CDC Light Trap	Culex quinquefasciatus	4
			Anopheles quadrimaculatus	2
			Aedes albopictus	4
			<b>Trap Total</b>	<b>14 (Avg. 7.0)</b>
<b>RC-12 Collections</b>				
200 Mimosa Dr, Pelahatchie, MS 39145, USA	07/08/2024	CDC Light Trap	Culex quinquefasciatus	3
			Aedes albopictus	2
200 Mimosa Dr, Pelahatchie, MS 39145, USA	07/22/2024	CDC Light Trap	Culex quinquefasciatus	4
			Aedes albopictus	6
<b>Trap Total</b>			<b>15 (Avg. 7.5)</b>	
<b>RC-13 Collections</b>				
112 Antioch-Shiloh Rd, Pelahatchie, MS 39145, USA	07/15/2024	CDC Light Trap	Culex quinquefasciatus	8
			Anopheles quadrimaculatus	1
			<b>Trap Total</b>	<b>9 (Avg. 9.0)</b>
<b>RC-14 Collections</b>				
101 Old Bugg Rd., Brandon, MS 39042, USA	07/15/2024	CDC Light Trap	Culex quinquefasciatus	2
			Anopheles quadrimaculatus	1
			Aedes albopictus	2
101 Old Bugg Rd., Brandon, MS 39042, USA	07/29/2024	CDC Light Trap	Culex quinquefasciatus	8
			Anopheles quadrimaculatus	1
			Aedes albopictus	1
			Culex salinarius	1
<b>Trap Total</b>			<b>16 (Avg. 8.0)</b>	
<b>RC-15 Collections</b>				
158 Johns Shiloh Rd, Brandon, MS 39042, USA	07/15/2024	CDC Light Trap	Culex quinquefasciatus	9
			Anopheles quadrimaculatus	1
			<b>Trap Total</b>	<b>10 (Avg. 10.0)</b>
<b>RC-16 Collections</b>				
200 Cemetery Rd., Brandon, MS 39042, USA	07/15/2024	CDC Light Trap	Culex quinquefasciatus	37
			Aedes albopictus	2
200 Cemetery Rd., Brandon, MS 39042, USA	07/29/2024	CDC Light Trap	Culex quinquefasciatus	8
			Aedes albopictus	2
<b>Trap Total</b>			<b>49 (Avg. 24.5)</b>	
<b>RC-17 Collections</b>				
576 Bethel Rd, Brandon, MS 39042, USA	07/15/2024	CDC Light Trap	Culex quinquefasciatus	2
			Anopheles quadrimaculatus	7
576 Bethel Rd, Brandon, MS 39042, USA	07/29/2024	CDC Light Trap	Culex quinquefasciatus	5
			Anopheles quadrimaculatus	6
			Aedes albopictus	3
<b>Trap Total</b>			<b>23 (Avg. 11.5)</b>	
<b>RC-18 Collections</b>				
833 Bobby Peede St, Brandon, MS 39042, USA	07/15/2024	CDC Light Trap	Culex quinquefasciatus	40
			Anopheles quadrimaculatus	6
			Aedes albopictus	5
833 Bobby Peede St, Brandon, MS 39042, USA	07/29/2024	CDC Light Trap	Culex quinquefasciatus	11
			Aedes albopictus	1

Trap Location	Date Trap Set	Trap Type	Mosquito Species	No. Collected
			<i>Trap Total</i>	63 (Avg. 31.5)
<b>RC-19 Collections</b>				
492 Cato Rd, Brandon, MS 39042, USA	07/15/2024	CDC Light Trap	Aedes albopictus	1
492 Cato Rd, Brandon, MS 39042, USA	07/29/2024	CDC Light Trap	Culex quinquefasciatus	20
			Psorophora spp.	1
			Aedes albopictus	1
			<i>Trap Total</i>	23 (Avg. 11.5)
<b>RC-20 Collections</b>				
2491 Shell Oil Rd, Brandon, MS 39042, USA	07/15/2024	CDC Light Trap	Culex quinquefasciatus	4
2491 Shell Oil Rd, Brandon, MS 39042, USA	07/29/2024	CDC Light Trap	Culex quinquefasciatus	11
			Aedes albopictus	1
			<i>Trap Total</i>	16 (Avg. 8.0)
<b>RC-21 Collections</b>				
205 Twin Cedars, Florence, MS 39073, USA	07/29/2024	CDC Light Trap	Culex quinquefasciatus	6
			Psorophora spp.	4
			Aedes albopictus	2
			<i>Trap Total</i>	12 (Avg. 12.0)
<b>RC-22 Collections</b>				
176 Berry Dr, Pearl, MS 39208, USA	07/29/2024	CDC Light Trap	Culex quinquefasciatus	19
			Anopheles quadrimaculatus	2
			Aedes albopictus	6
			<i>Trap Total</i>	27 (Avg. 27.0)
<b>RC-24 Collections</b>				
120 Barron Ln, Florence, MS 39073, USA	07/15/2024	CDC Light Trap	Culex quinquefasciatus	3
			Aedes albopictus	1
120 Barron Ln, Florence, MS 39073, USA	07/29/2024	CDC Light Trap	Culex quinquefasciatus	3
			<i>Trap Total</i>	7 (Avg. 3.5)
<b>RC-25 Collections</b>				
260 N Brandon Blvd, Brandon, MS 39042, USA	07/08/2024	CDC Light Trap	Culex quinquefasciatus	4
			Aedes albopictus	2
260 N Brandon Blvd, Brandon, MS 39042, USA	07/22/2024	CDC Light Trap	Culex quinquefasciatus	7
			Anopheles quadrimaculatus	1
			Aedes albopictus	3
			<i>Trap Total</i>	17 (Avg. 8.5)
<b>RC-26 Collections</b>				
109 Sherrills Ln, Brandon, MS 39047, USA	07/08/2024	CDC Light Trap	Culex quinquefasciatus	6
			Anopheles quadrimaculatus	1
			Aedes albopictus	2
			<i>Trap Total</i>	9 (Avg. 9.0)
<b>RC-27 Collections</b>				
188 Richmond Dr, Florence, MS 39073, USA	07/15/2024	CDC Light Trap	Culex quinquefasciatus	4
			Anopheles quadrimaculatus	3
			Aedes albopictus	1
188 Richmond Dr, Florence, MS 39073, USA	07/29/2024	CDC Light Trap	Culex quinquefasciatus	3
			<i>Trap Total</i>	11 (Avg. 5.5)



<b>Trap Location</b>	<b>Date Trap Set</b>	<b>Trap Type</b>	<b>Mosquito Species</b>	<b>No. Collected</b>
			<i>Overall Trap Total</i>	396
			<i>Overall Trap Average</i>	10.4

# Adult Mosquito Surveillance Report

Start Date: 07/01/2024 End Date: 07/31/2024

## Rankin County

Trap Location	Date Trap Set	Trap Type	Mosquito Species	No. Collected
<b>RC-03 Collections</b>				
358 Sand Hill Rd, Brandon, MS 39042, USA	07/08/2024	Gravid Trap	Culex quinquefasciatus	4
			Anopheles quadrimaculatus	2
			Aedes albopictus	1
358 Sand Hill Rd, Brandon, MS 39042, USA	07/10/2024	Gravid Trap	Culex quinquefasciatus	89
			Aedes albopictus	7
			<b>Trap Total</b>	<b>103 (Avg. 51.5)</b>
<b>RC-06 Collections</b>				
1130 Gerrits Landing, Brandon, MS 39047, USA	07/10/2024	Gravid Trap	Culex quinquefasciatus	100
1130 Gerrits Landing, Brandon, MS 39047, USA	07/22/2024	Gravid Trap	Culex quinquefasciatus	5
			Aedes albopictus	3
<b>Trap Total</b>				<b>108 (Avg. 54.0)</b>
<b>RC-10 Collections</b>				
209 Wexford Ct., Brandon, MS 39047, USA	07/08/2024	Gravid Trap	Culex quinquefasciatus	3
209 Wexford Ct., Brandon, MS 39047, USA	07/10/2024	Gravid Trap	Culex quinquefasciatus	7
			Aedes albopictus	11
<b>Trap Total</b>				<b>21 (Avg. 10.5)</b>
<b>RC-12 Collections</b>				
207 Grimes St, Pelahatchie, MS 39145, USA	07/22/2024	Gravid Trap	Culex quinquefasciatus	5
			Aedes albopictus	2
<b>Trap Total</b>				<b>7 (Avg. 7.0)</b>
<b>RC-16 Collections</b>				
200 Cemetery Rd., Brandon, MS 39042, USA	07/15/2024	Gravid Trap	Culex quinquefasciatus	68
			Aedes albopictus	2
200 Cemetery Rd., Brandon, MS 39042, USA	07/29/2024	Gravid Trap	Culex quinquefasciatus	36
			Aedes albopictus	3
<b>Trap Total</b>				<b>109 (Avg. 54.5)</b>
<b>RC-18 Collections</b>				
833 Bobby Peede St, Brandon, MS 39042, USA	07/29/2024	Gravid Trap	Culex quinquefasciatus	12
			Aedes albopictus	11
<b>Trap Total</b>				<b>23 (Avg. 23.0)</b>
<b>RC-21 Collections</b>				
201 Twin Cedars, Florence, MS 39073, USA	07/15/2024	Gravid Trap	Culex quinquefasciatus	20
			Aedes albopictus	2
201 Twin Cedars, Florence, MS 39073, USA	07/29/2024	Gravid Trap	Culex quinquefasciatus	6
			Aedes albopictus	9
<b>Trap Total</b>				<b>37 (Avg. 18.5)</b>
<b>RC-22 Collections</b>				
176 Berry Dr, Pearl, MS 39208, USA	07/15/2024	Gravid Trap	Culex quinquefasciatus	15
			Aedes albopictus	7

Vector Disease Control International  
 303 Mimosa Ave.  
 Pelahatchie, MS 39145

<b>Trap Location</b>	<b>Date Trap Set</b>	<b>Trap Type</b>	<b>Mosquito Species</b>	<b>No. Collected</b>
176 Berry Dr, Pearl, MS 39208, USA	07/26/2024	Gravid Trap	Culex quinquefasciatus	41
176 Berry Dr, Pearl, MS 39208, USA	07/29/2024	Gravid Trap	Culex quinquefasciatus	18
			Aedes albopictus	2
<b>Trap Total</b>				<b>83 (Avg. 27.7)</b>
<b>RC-25 Collections</b>				
260 N Brandon Blvd, Brandon, MS 39042, USA	07/08/2024	Gravid Trap	Culex quinquefasciatus	7
			Anopheles quadrimaculatus	1
260 N Brandon Blvd, Brandon, MS 39042, USA	07/22/2024	Gravid Trap	Culex quinquefasciatus	7
			Aedes albopictus	5
<b>Trap Total</b>				<b>20 (Avg. 10.0)</b>
<b>RC-27 Collections</b>				
116 Katie Ln, Florence, MS 39073, USA	07/01/2024	Gravid Trap	Culex quinquefasciatus	1
<b>Trap Total</b>				<b>1 (Avg. 1.0)</b>
125 Stanton Hall Dr, Florence, MS 39073, USA	07/02/2024	Gravid Trap	No Mosquitoes	0
<b>Trap Total</b>				<b>0 (Avg. 0.0)</b>
132 E Fork Dr, Florence, MS 39073, USA	07/01/2024	Gravid Trap	Culex quinquefasciatus	1
<b>Trap Total</b>				<b>1 (Avg. 1.0)</b>
188 Richmond Dr, Florence, MS 39073, USA	07/15/2024	Gravid Trap	Culex quinquefasciatus	100
			Aedes albopictus	2
188 Richmond Dr, Florence, MS 39073, USA	07/29/2024	Gravid Trap	Culex quinquefasciatus	28
<b>Trap Total</b>				<b>130 (Avg. 65.0)</b>
200 Richmond Dr, Florence, MS 39073, USA	07/02/2024	Gravid Trap	Culex quinquefasciatus	10
<b>Trap Total</b>				<b>10 (Avg. 10.0)</b>
3947 US 49, Florence, MS 39073, USA	07/02/2024	Gravid Trap	No Mosquitoes	0
<b>Trap Total</b>				<b>0 (Avg. 0.0)</b>
<b>Overall Trap Total</b>				<b>653</b>
<b>Overall Trap Average</b>				<b>27.2</b>

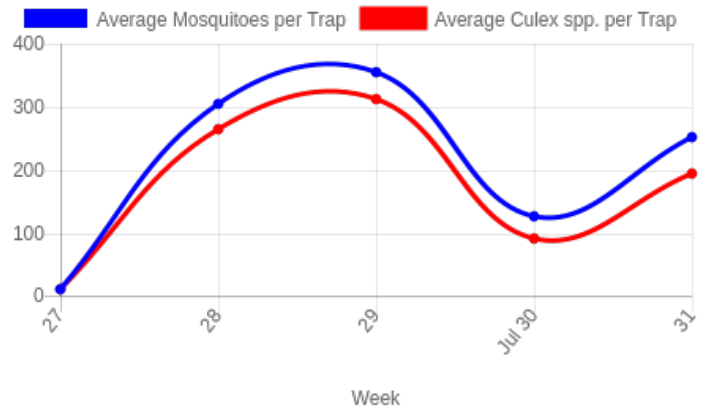
# 2024 Rankin County Trap Composite Data

Total number of trap/nights set: 62  
 Total number of mosquitoes collected: 1,049.0  
 Average mosquitoes per trap/night: 16.9  
 Average Culex per trap/night: 14.1

## Species collected and abundance:

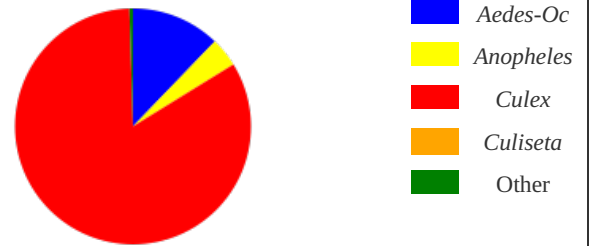
<i>Aedes albopictus</i>	128.0	12.2%
<i>Anopheles quadrimaculatus</i>	42.0	4.0%
<i>Culex quinquefasciatus</i>	873.0	83.2%
<i>Culex salinarius</i>	1.0	0.1%
<i>Psorophora spp.</i>	5.0	0.5%

## Seasonality



## Genus Proportions:

Genus	Number	Percent of Total
<i>Aedes/Ochlerotatus</i>	128	12.2%
<i>Anopheles</i>	42	4.0%
<i>Culex</i>	874	83.3%
<i>Culiseta</i>	0	0.0%
Other	5	0.5%





## 2024 WNV Positive Pools

Start Date: 07/01/2024    End Date: 07/31/2024

---

### Rankin County

---

Trap Location	Total Positive Pools
1130 Gerrits Landing , Brandon, MS 39047, USA	0
176 Berry Dr, Pearl, MS 39208, USA	1
188 Richmond Dr, Florence, MS 39073, USA	0
200 Cemetery Rd., Brandon, MS 39042, USA	0
200 Richmond Dr, Florence, MS 39073, USA	0
201 Twin Cedars, Florence, MS 39073, USA	0
358 Sand Hill Rd, Brandon, MS 39042, USA	0
492 Cato Rd, Brandon, MS 39042, USA	0
833 Bobby Peede St, Brandon, MS 39042, USA	0

**Total Positive: 1**

# Larvicide Applications

Start Date: 07/01/2024 End Date: 07/31/2024

## Rankin County

Date	Site Name	Habitat	No. of Larvae	Larvicide	Amount Applied (oz.)	Area Treated (sq. ft.)
<b>Florence-01 Applications</b>						
07/01/2024	10521 Mh 4	Ditch	1-10	Vectobac 12AS (General Use) (73049-38)	1.0	5,445.0
<b>Total Ounces Applied</b>					<b>1.0</b>	<b>5,445.0 0.1 acres</b>
<b>Total Larvicide Applied in Florence-01:</b>					<b>1.0</b>	<b>5,445.0 0.1 acres</b>
<b>RC-07 Applications</b>						
07/23/2024	RA07.E.PinebrookDr.04	Ditch	1-10	Vectobac G (General Use) (73049-10)	1.0	272.3
07/23/2024	RC-30	Temporary Standing Water	1-10	Vectobac G (General Use) (73049-10)	1.0	272.3
07/23/2024	RA07.PinebrookPl.06	Ditch	1-10	Vectobac G (General Use) (73049-10)	1.0	272.3
07/23/2024	RA07.TurtleLn.03	Ditch	1-10	Vectobac G (General Use) (73049-10)	1.0	272.3
07/23/2024	RC07.PinebrookCir.09	Temporary Standing Water	1-10	Vectobac G (General Use) (73049-10)	1.0	272.3
07/23/2024	RA07.TurtleLn.01	Ditch	1-10	Vectobac G (General Use) (73049-10)	1.0	272.3
07/23/2024	RA07.Pineleaf.10	Ditch	1-10	Vectobac G (General Use) (73049-10)	1.0	272.3
<b>Total Ounces Applied</b>					<b>7.0</b>	<b>1,905.8 0.0 acres</b>
<b>Total Larvicide Applied in RC-07:</b>					<b>7.0</b>	<b>1,905.8 0.0 acres</b>
<b>RC-08 Applications</b>						
07/18/2024	91620.nf.2	Ditch	1-10	Vectobac G (General Use) (73049-10)	3.0	16,335.0
<b>Total Ounces Applied</b>					<b>3.0</b>	<b>16,335.0 0.4 acres</b>
<b>Total Larvicide Applied in RC-08:</b>					<b>3.0</b>	<b>16,335.0 0.4 acres</b>
<b>RC-11 Applications</b>						
07/08/2024	042720.nf.3	Ditch	1-10	Vectobac 12AS (General Use) (73049-38)	4.0	21,780.0
07/08/2024	RA11.ScottRd.05	Ditch	11-50	Vectobac 12AS (General Use) (73049-38)	6.0	32,670.0

Vector Disease Control International  
303 Mimosa Ave.  
Pelahatchie, MS 39145

Date	Site Name	Habitat	No. of Larvae	Larvicide	Amount Applied (oz.)	Area Treated (sq. ft.)
07/08/2024	82421 Mh 2	Ditch	1-10	Vectobac 12AS (General Use) (73049-38)	4.0	21,780.0
07/08/2024	I P Road	Ditch	1-10	Vectobac 12AS (General Use) (73049-38)	4.0	21,780.0
07/08/2024	81920	Ditch	11-50	Vectobac 12AS (General Use) (73049-38)	4.0	21,780.0
<b>Total Ounces Applied</b>					22.0	119,790.0 2.8 acres
<b>Total Larvicide Applied in RC-11:</b>					22.0	119,790.0 2.8 acres

RC-12 Applications						
07/01/2024	102319.mh.rc.2	Ditch	1-10	Vectobac G (General Use) (73049-10)	6.0	1,633.5
07/01/2024	RC.BarefootTrl.001	Ditch	1-10	Vectobac G (General Use) (73049-10)	5.0	1,361.3
07/01/2024	AN.100421.005	Ditch	1-10	Vectobac G (General Use) (73049-10)	6.0	1,633.5
07/01/2024	102020.nf.7	Ditch	1-10	Vectobac G (General Use) (73049-10)	5.0	1,361.3
<b>Total Ounces Applied</b>					22.0	5,989.5 0.1 acres
<b>Total Larvicide Applied in RC-12:</b>					22.0	5,989.5 0.1 acres

RC-13 Applications						
07/15/2024	RA13.DavidHendersonRd.02	Ditch	1-10	Vectobac 12AS (General Use) (73049-38)	6.0	32,670.0
07/15/2024	051320.nf.3	Ditch	1-10	Vectobac 12AS (General Use) (73049-38)	6.0	32,670.0
<b>Total Ounces Applied</b>					12.0	65,340.0 1.5 acres
<b>Total Larvicide Applied in RC-13:</b>					12.0	65,340.0 1.5 acres

RC-16 Applications						
07/22/2024	RA16.OilWellRd.05	Ditch	1-10	Vectobac G (General Use) (73049-10)	1.0	272.3
07/22/2024	82621 Mh	Ditch	1-10	Vectobac G (General Use) (73049-10)	1.0	272.3
07/22/2024	Ra16oilwellrd	Ditch	1-10	Vectobac G (General Use) (73049-10)	1.0	272.3
07/22/2024	RA16.BainCir.03	Ditch	1-10	Vectobac G (General Use) (73049-10)	1.0	272.3
07/22/2024	82621 Mh 3	Ditch	1-10	Vectobac G (General Use) (73049-10)	1.0	272.3
<b>Total Ounces Applied</b>					5.0	1,361.3 0.0 acres

Date	Site Name	Habitat	No. of Larvae	Larvicide	Amount Applied (oz.)	Area Treated (sq. ft.)
<b>Total Larvicide Applied in RC-16:</b>					5.0	1,361.3 0.0 acres
<b>RC-17 Applications</b>						
07/03/2024	Ra17cedarspringcir3	Ditch	1-10	Vectobac 12AS (General Use) (73049-38)	4.0	21,780.0
07/03/2024	Ra17liveoaksblvd.3	Ditch	1-10	Vectobac 12AS (General Use) (73049-38)	2.0	10,890.0
07/03/2024	RA.17A.CedarBrookDr.01	Ditch	1-10	Vectobac 12AS (General Use) (73049-38)	4.0	21,780.0
07/16/2024	RA17B.ArrowheadDr.03	Ditch	11-50	Vectobac 12AS (General Use) (73049-38)	6.0	32,670.0
<b>Total Ounces Applied</b>					16.0	87,120.0 2.0 acres
<b>Total Larvicide Applied in RC-17:</b>					16.0	87,120.0 2.0 acres
<b>RC-22 Applications</b>						
07/18/2024	Ra24oldplacerd4	Ditch	1-10	Vectobac G (General Use) (73049-10)	1.0	272.3
<b>Total Ounces Applied</b>					1.0	272.3 0.0 acres
<b>Total Larvicide Applied in RC-22:</b>					1.0	272.3 0.0 acres
<b>RC-23 Applications</b>						
07/30/2024	Ra 23 Mangum Rd	Ditch	1-10	Vectobac G (General Use) (73049-10)	1.0	272.3
<b>Total Ounces Applied</b>					1.0	272.3 0.0 acres
<b>Total Larvicide Applied in RC-23:</b>					1.0	272.3 0.0 acres
<b>RC-24 Applications</b>						
07/18/2024	92821 Mh 2	Ditch	1-10	Vectobac G (General Use) (73049-10)	1.0	272.3
<b>Total Ounces Applied</b>					1.0	272.3 0.0 acres
<b>Total Larvicide Applied in RC-24:</b>					1.0	272.3 0.0 acres
<b>RC-26 Applications</b>						
07/03/2024	Ra26bayvis2	Ditch	1-10	Vectobac G (General Use) (73049-10)	1.0	272.3
<b>Total Ounces Applied</b>					1.0	272.3 0.0 acres
<b>Total Larvicide Applied in RC-26:</b>					1.0	272.3 0.0 acres
<b>RC-27 Applications</b>						
07/02/2024	61620.mh.2	Ditch	11-50	Vectobac 12AS (General Use) (73049-38)	4.0	21,780.0



<b>Date</b>	<b>Site Name</b>	<b>Habitat</b>	<b>No. of Larvae</b>	<b>Larvicide</b>	<b>Amount Applied (oz.)</b>	<b>Area Treated (sq. ft.)</b>
07/02/2024	4272 Mh 2	Ditch	1-10	Vectobac 12AS (General Use) (73049-38)	2.0	10,890.0
07/03/2024	AN.081221.001	Ditch	1-10	Vectobac 12AS (General Use) (73049-38)	2.0	10,890.0
07/03/2024	42721 Mh 4	Ditch	11-50	Vectobac 12AS (General Use) (73049-38)	6.0	32,670.0
07/29/2024	RA.27.WilliamsDr.01	Ditch	1-10	Vectobac 12AS (General Use) (73049-38)	2.0	10,890.0
07/29/2024	51820.mh.3	Ditch	1-10	Vectobac 12AS (General Use) (73049-38)	2.0	10,890.0
<b>Total Ounces Applied</b>					<b>18.0</b>	<b>98,010.0 2.3 acres</b>
07/09/2024	51820.mh.7	Temporary Standing Water	1-10	Vectobac G (General Use) (73049-10)	1.0	272.3
<b>Total Ounces Applied</b>					<b>1.0</b>	<b>272.3 0.0 acres</b>
<b>Total Larvicide Applied in RC-27:</b>					<b>19.0</b>	<b>98,282.3 2.3 acres</b>
<b>Overall Total Ounces Applied</b>					<b>111.0</b>	<b>402,657.8 9.2 acres</b>

# Ground Adulticide Applications

**Start Date:** 07/01/2024    **End Date:** 07/31/2024

**Rankin County**

Month	Date	Municipality	Chemical	Mix Ratio	Trip Miles	Spray Miles	Spray Acres	Gallons Sprayed
Rankin 02 Applications								
July 2024	07/01/2024	N/A	Permanone 30-30 (General Use) (432-1235)	1:5	73.3	29.8	1,083.2	6.9
<i>Total Permanone 30-30 (General Use) Applied:</i>								6.9
<b>Rankin 02 Totals:</b>					<b>73.3</b>	<b>29.8</b>	<b>1,083.2</b>	<b>6.9</b>
Rankin 03 Applications								
July 2024	07/08/2024	N/A	Permanone 30-30 (General Use) (432-1235)	1:5	87.4	42.1	1,529.7	7.5
<i>Total Permanone 30-30 (General Use) Applied:</i>								7.5
<b>Rankin 03 Totals:</b>					<b>87.4</b>	<b>42.1</b>	<b>1,529.7</b>	<b>7.5</b>
Rankin 04 Applications								
July 2024	07/02/2024	N/A	Permanone 30-30 (General Use) (432-1235)	1:5	79.7	17.1	622.9	4.5
<i>Total Permanone 30-30 (General Use) Applied:</i>								4.5
<b>Rankin 04 Totals:</b>					<b>79.7</b>	<b>17.1</b>	<b>622.9</b>	<b>4.5</b>
Rankin 05 Applications								
July 2024	07/03/2024	N/A	Permanone 30-30 (General Use) (432-1235)	1:5	76.2	32.1	1,167.5	5.7
<i>Total Permanone 30-30 (General Use) Applied:</i>								5.7

**Vector Disease Control International**  
303 Mimosa Ave.  
Pelahatchie, MS 39145

Month	Date	Municipality	Chemical	Mix Ratio	Trip Miles	Spray Miles	Spray Acres	Gallons Sprayed
				<b>Rankin 05 Totals:</b>	<b>76.2</b>	<b>32.1</b>	<b>1,167.5</b>	<b>5.7</b>
<b>Rankin 07 Applications</b>								
July 2024	07/31/2024	N/A	Permanone 30-30 (General Use) (432-1235)	1:5	78.1	27.7	1,006.8	6.5
				<i>Total Permanone 30-30 (General Use) Applied:</i>				<b>6.5</b>
				<b>Rankin 07 Totals:</b>	<b>78.1</b>	<b>27.7</b>	<b>1,006.8</b>	<b>6.5</b>
<b>Rankin 08 Applications</b>								
July 2024	07/30/2024	N/A	Permanone 30-30 (General Use) (432-1235)	1:5	108.4	42.5	1,543.5	9.8
				<i>Total Permanone 30-30 (General Use) Applied:</i>				<b>9.8</b>
				<b>Rankin 08 Totals:</b>	<b>108.4</b>	<b>42.5</b>	<b>1,543.5</b>	<b>9.8</b>
<b>Rankin 09 Applications</b>								
July 2024	07/17/2024	N/A	Permanone 30-30 (General Use) (432-1235)	1:5	24.8	4.3	155.6	1.0
				<i>Total Permanone 30-30 (General Use) Applied:</i>				<b>1.0</b>
				<b>Rankin 09 Totals:</b>	<b>24.8</b>	<b>4.3</b>	<b>155.6</b>	<b>1.0</b>
<b>Rankin 10 Applications</b>								
July 2024	07/18/2024	N/A	Perm-X UL 30-30 (General Use) (89459-44)	1:5	84.4	29.4	1,070.1	6.8
	07/25/2024	N/A	Perm-X UL 30-30 (General Use) (89459-44)	1:5	81.5	29.9	1,085.7	7.1
				<i>Total Perm-X UL 30-30 (General Use) Applied:</i>				<b>13.9</b>
				<b>Rankin 10 Totals:</b>	<b>165.8</b>	<b>59.3</b>	<b>2,155.8</b>	<b>13.9</b>

Month	Date	Municipality	Chemical	Mix Ratio	Trip Miles	Spray Miles	Spray Acres	Gallons Sprayed
<b>Rankin 11 Applications</b>								
July 2024	07/10/2024	N/A	Permanone 30-30 (General Use) (432-1235)	1:5	67.9	27.0	981.0	6.0
<i>Total Permanone 30-30 (General Use) Applied:</i>								6.0
<b>Rankin 11 Totals:</b>					<b>67.9</b>	<b>27.0</b>	<b>981.0</b>	<b>6.0</b>
<b>Rankin 12 Applications</b>								
July 2024	07/15/2024	N/A	Permanone 30-30 (General Use) (432-1235)	1:5	56.0	53.0	1,927.1	7.0
<i>Total Permanone 30-30 (General Use) Applied:</i>								7.0
<b>Rankin 12 Totals:</b>					<b>56.0</b>	<b>53.0</b>	<b>1,927.1</b>	<b>7.0</b>
<b>Rankin 13 Applications</b>								
July 2024	07/02/2024	N/A	Permanone 30-30 (General Use) (432-1235)	1:5	104.4	55.1	2,001.6	12.8
<i>Total Permanone 30-30 (General Use) Applied:</i>								12.8
<b>Rankin 13 Totals:</b>					<b>104.4</b>	<b>55.1</b>	<b>2,001.6</b>	<b>12.8</b>
<b>Rankin 14 Applications</b>								
July 2024	07/09/2024	N/A	Permanone 30-30 (General Use) (432-1235)	1:5	58.2	26.1	950.5	4.7
<i>Total Permanone 30-30 (General Use) Applied:</i>								4.7
<b>Rankin 14 Totals:</b>					<b>58.2</b>	<b>26.1</b>	<b>950.5</b>	<b>4.7</b>
<b>Rankin 15 Applications</b>								
July 2024	07/30/2024	N/A	Permanone 30-30 (General Use) (432-1235)	1:5	81.4	44.4	1,614.8	10.3
<i>Total Permanone 30-30 (General Use) Applied:</i>								10.3

Month	Date	Municipality	Chemical	Mix Ratio	Trip Miles	Spray Miles	Spray Acres	Gallons Sprayed
				<b>Rankin 15 Totals:</b>	<b>81.4</b>	<b>44.4</b>	<b>1,614.8</b>	<b>10.3</b>
<b>Rankin 16 Applications</b>								
July 2024	07/18/2024	N/A	Permanone 30-30 (General Use) (432-1235)	1:5	71.5	23.7	863.2	5.5
				<i>Total Permanone 30-30 (General Use) Applied:</i>				<b>5.5</b>
				<b>Rankin 16 Totals:</b>	<b>71.5</b>	<b>23.7</b>	<b>863.2</b>	<b>5.5</b>
<b>Rankin 17 Applications</b>								
July 2024	07/09/2024	N/A	Perm-X UL 30-30 (General Use) (89459-44)	1:5	81.2	39.0	1,418.8	9.0
	07/11/2024	N/A	Perm-X UL 30-30 (General Use) (89459-44)	1:5	56.8	24.1	875.9	5.5
				<i>Total Perm-X UL 30-30 (General Use) Applied:</i>				<b>14.5</b>
				<b>Rankin 17 Totals:</b>	<b>137.9</b>	<b>63.1</b>	<b>2,294.7</b>	<b>14.5</b>
<b>Rankin 18 Applications</b>								
July 2024	07/08/2024	N/A	Permanone 30-30 (General Use) (432-1235)	1:5	0.0	0.0	0.0	0.0
				<i>Total Permanone 30-30 (General Use) Applied:</i>				<b>0.0</b>
<b>Rankin 19 Applications</b>								
July 2024	07/15/2024	N/A	Permanone 30-30 (General Use) (432-1235)	1:5	102.8	52.8	1,920.9	12.3
				<i>Total Permanone 30-30 (General Use) Applied:</i>				<b>12.3</b>
				<b>Rankin 19 Totals:</b>	<b>102.8</b>	<b>52.8</b>	<b>1,920.9</b>	<b>12.3</b>
<b>Rankin 20 Applications</b>								

Month	Date	Municipality	Chemical	Mix Ratio	Trip Miles	Spray Miles	Spray Acres	Gallons Sprayed
July 2024	07/09/2024	N/A	Permanone 30-30 (General Use) (432-1235)	1:5	104.9	64.7	2,353.2	15.1
<i>Total Permanone 30-30 (General Use) Applied:</i>								15.1
<b>Rankin 20 Totals:</b>					<b>104.9</b>	<b>64.7</b>	<b>2,353.2</b>	<b>15.1</b>

Rankin 21 Applications								
July 2024	07/08/2024	N/A	Permanone 30-30 (General Use) (432-1235)	1:5	83.3	52.4	1,904.2	12.2
<i>Total Permanone 30-30 (General Use) Applied:</i>								12.2
<b>Rankin 21 Totals:</b>					<b>83.3</b>	<b>52.4</b>	<b>1,904.2</b>	<b>12.2</b>

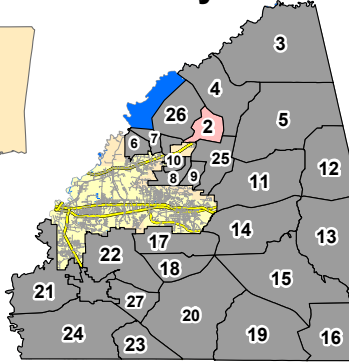
Rankin 22 Applications								
July 2024	07/10/2024	N/A	Permanone 30-30 (General Use) (432-1235)	1:5	73.2	39.3	1,427.9	10.2
<i>Total Permanone 30-30 (General Use) Applied:</i>								10.2
<b>Rankin 22 Totals:</b>					<b>73.2</b>	<b>39.3</b>	<b>1,427.9</b>	<b>10.2</b>

Rankin 23 Applications								
July 2024	07/11/2024	N/A	Permanone 30-30 (General Use) (432-1235)	1:5	41.0	25.8	938.1	6.0
<i>Total Permanone 30-30 (General Use) Applied:</i>								6.0
<b>Rankin 23 Totals:</b>					<b>41.0</b>	<b>25.8</b>	<b>938.1</b>	<b>6.0</b>

Rankin 24 Applications								
July 2024	07/17/2024	N/A	Permanone 30-30 (General Use) (432-1235)	1:5	59.0	37.9	1,376.2	9.1
	07/29/2024	N/A	Permanone 30-30 (General Use) (432-1235)	1:5	37.2	24.2	881.0	5.6

Month	Date	Municipality	Chemical	Mix Ratio	Trip Miles	Spray Miles	Spray Acres	Gallons Sprayed	
				<i>Total Permanone 30-30 (General Use) Applied:</i>					14.7
				<b>Rankin 24 Totals:</b>					14.7
<b>Rankin 25 Applications</b>									
July 2024	07/31/2024	N/A	Permanone 30-30 (General Use) (432-1235)	1:5	79.0	35.3	1,283.5	8.2	
				<i>Total Permanone 30-30 (General Use) Applied:</i>					8.2
				<b>Rankin 25 Totals:</b>					8.2
<b>Rankin 27 Applications</b>									
July 2024	07/01/2024	N/A	Permanone 30-30 (General Use) (432-1235)	1:5	57.4	31.1	1,130.8	7.2	
				<i>Total Permanone 30-30 (General Use) Applied:</i>					7.2
				<b>Rankin 27 Totals:</b>					7.2
				<b>Grand Totals:</b>					202.4

# Rankin County



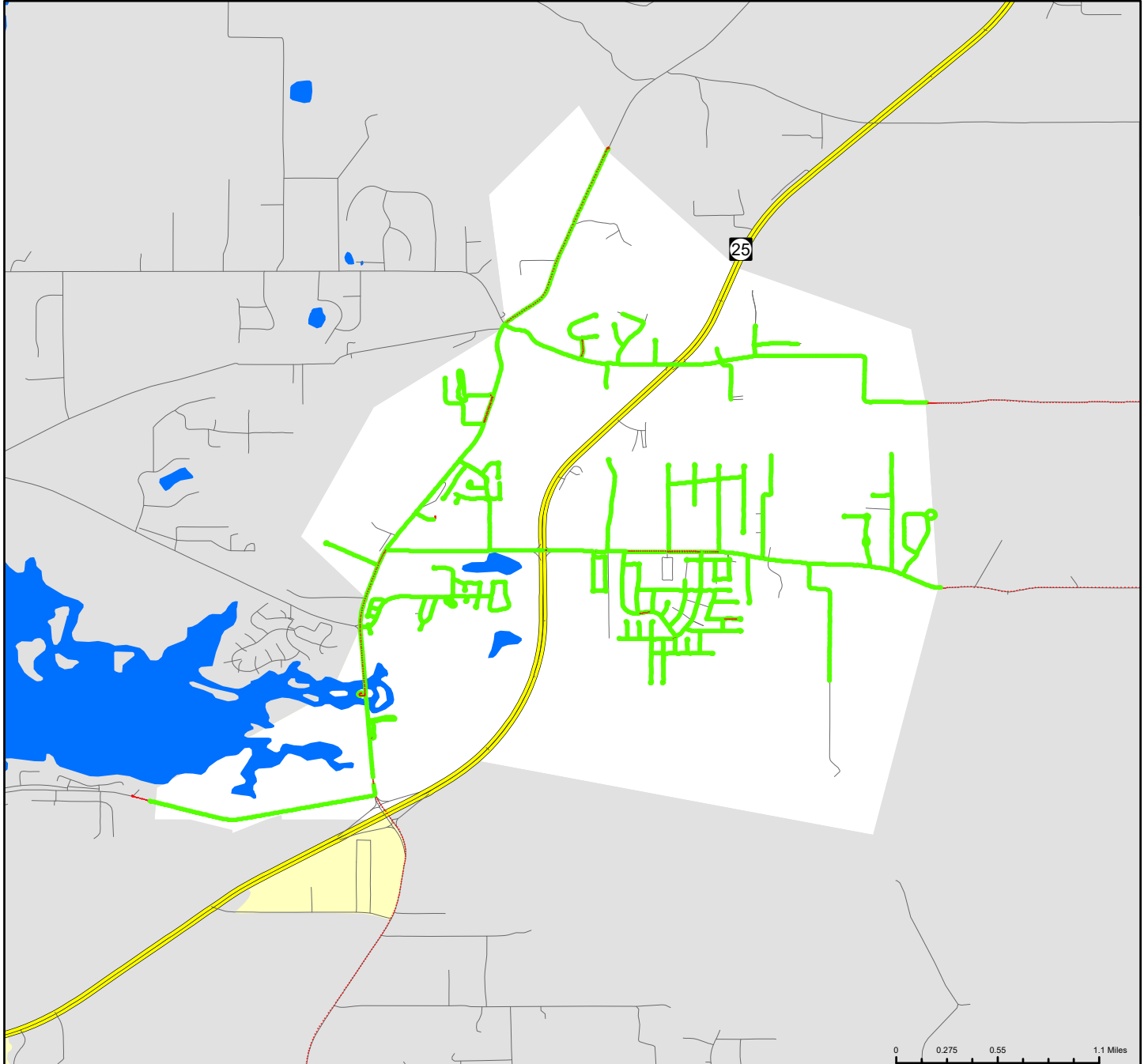
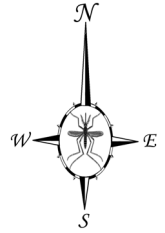
# Rankin County, Mississippi

Ground Adulticide Application Date:  
July 1, 2024

## Sprayer Status

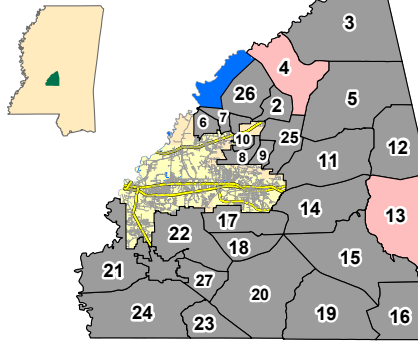
- Sprayer Off
- Sprayer On

Chemical: Permanone 30-30  
Quantity Used: 6.9 gal  
Miles Treated: 29.8  
Acres Treated: 1,083.3





# Rankin County



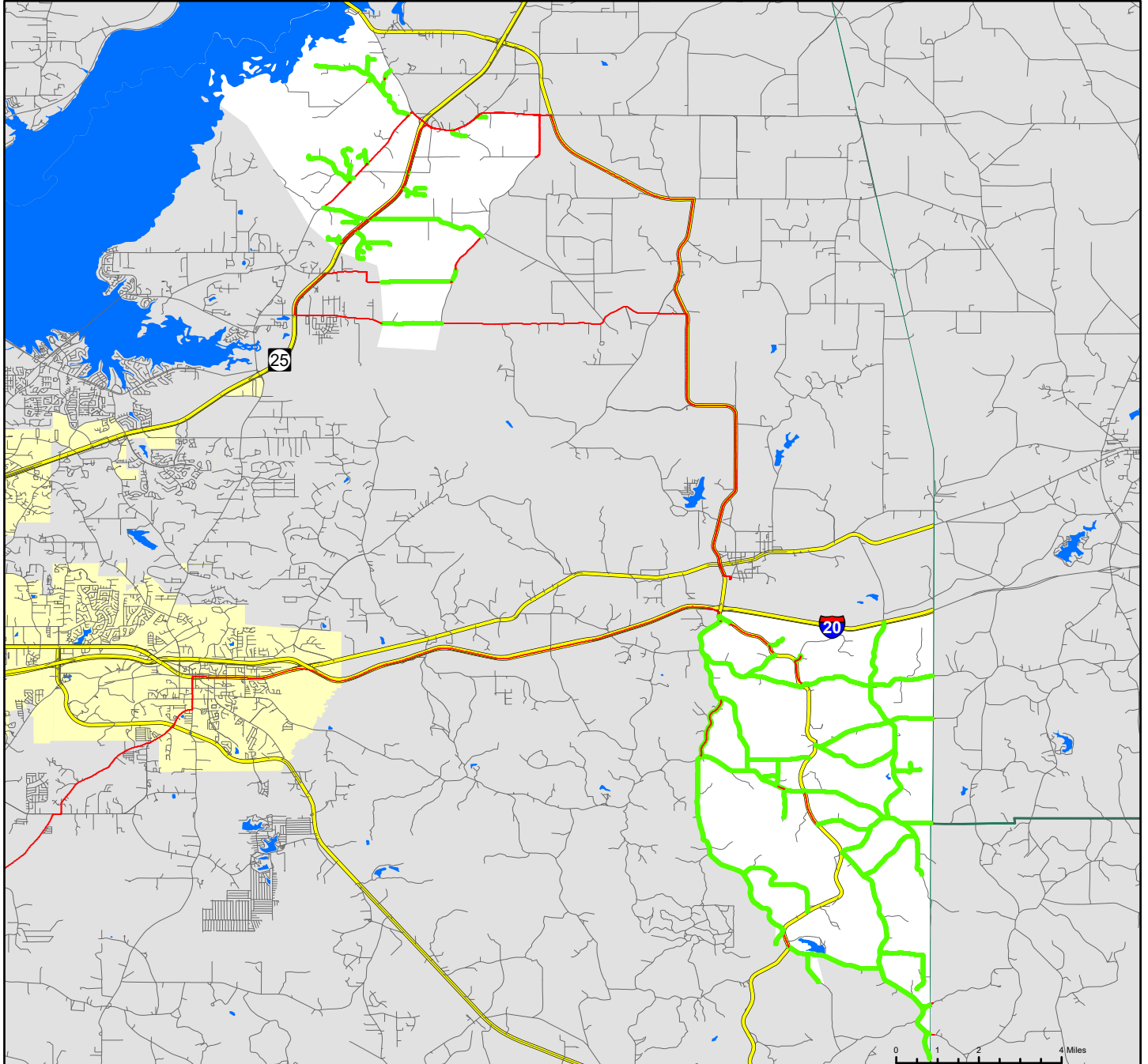
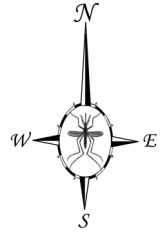
# Rankin County, Mississippi

Ground Adulticide Application Date:  
July 2, 2024

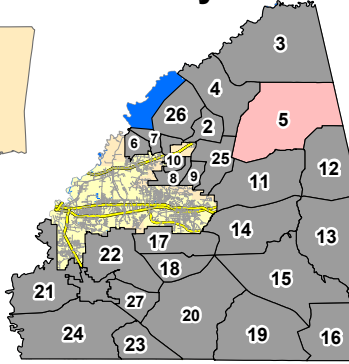
### Sprayer Status

- Sprayer Off
- Sprayer On

Chemical: Permanone 30-30  
Quantity Used: 17.3 gal  
Miles Treated: 72.2  
Acres Treated: 2,624.7



# Rankin County



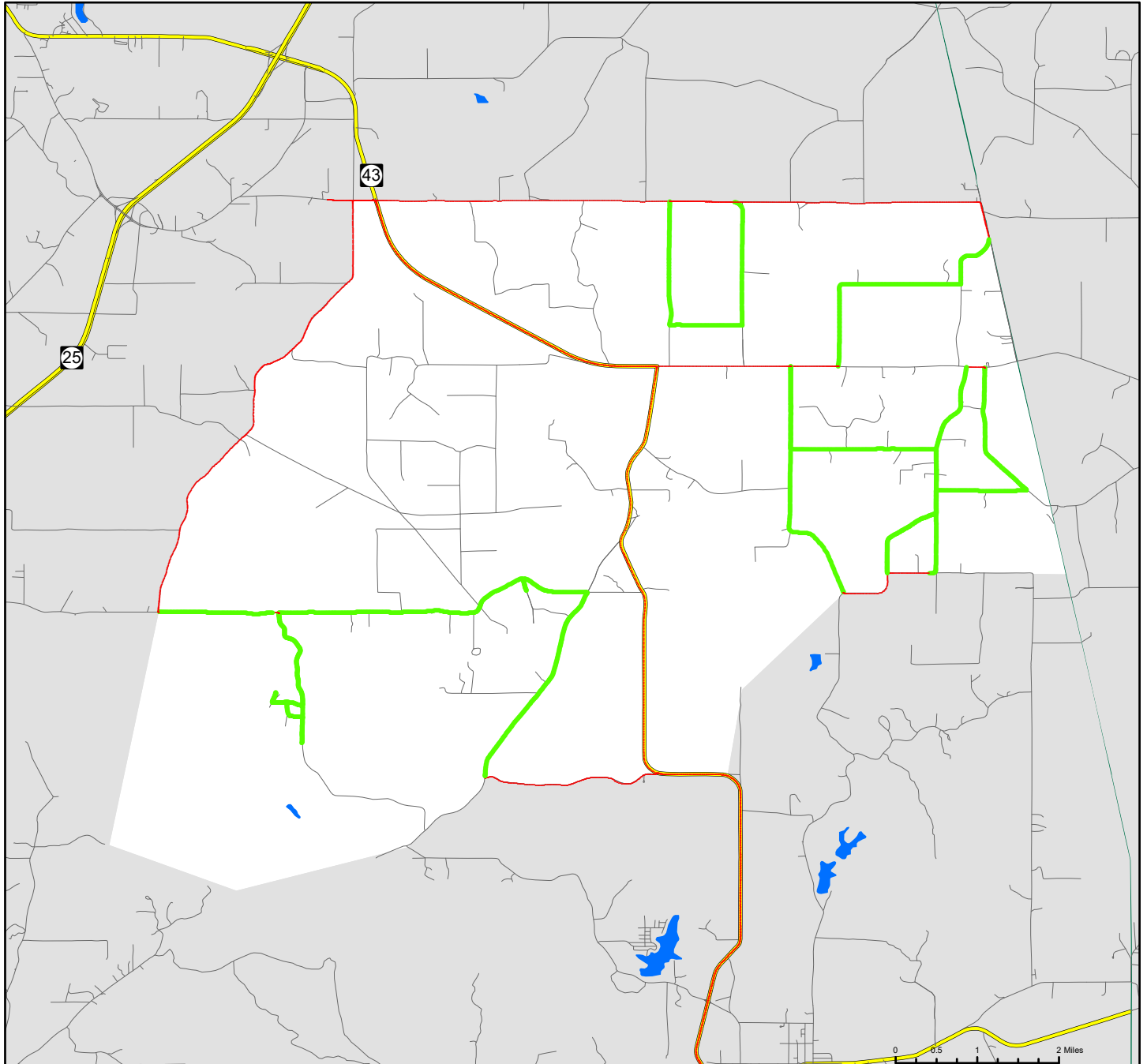
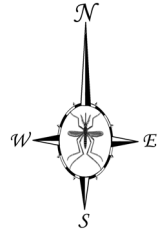
# Rankin County, Mississippi

Ground Adulticide Application Date:  
July 3, 2024

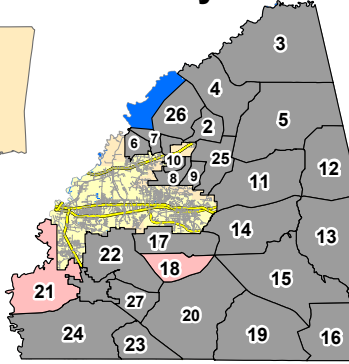
## Sprayer Status

- Sprayer Off
- Sprayer On

Chemical: Permanone 30-30  
Quantity Used: 5.7 gal  
Miles Treated: 32.1  
Acres Treated: 1,167.5



# Rankin County



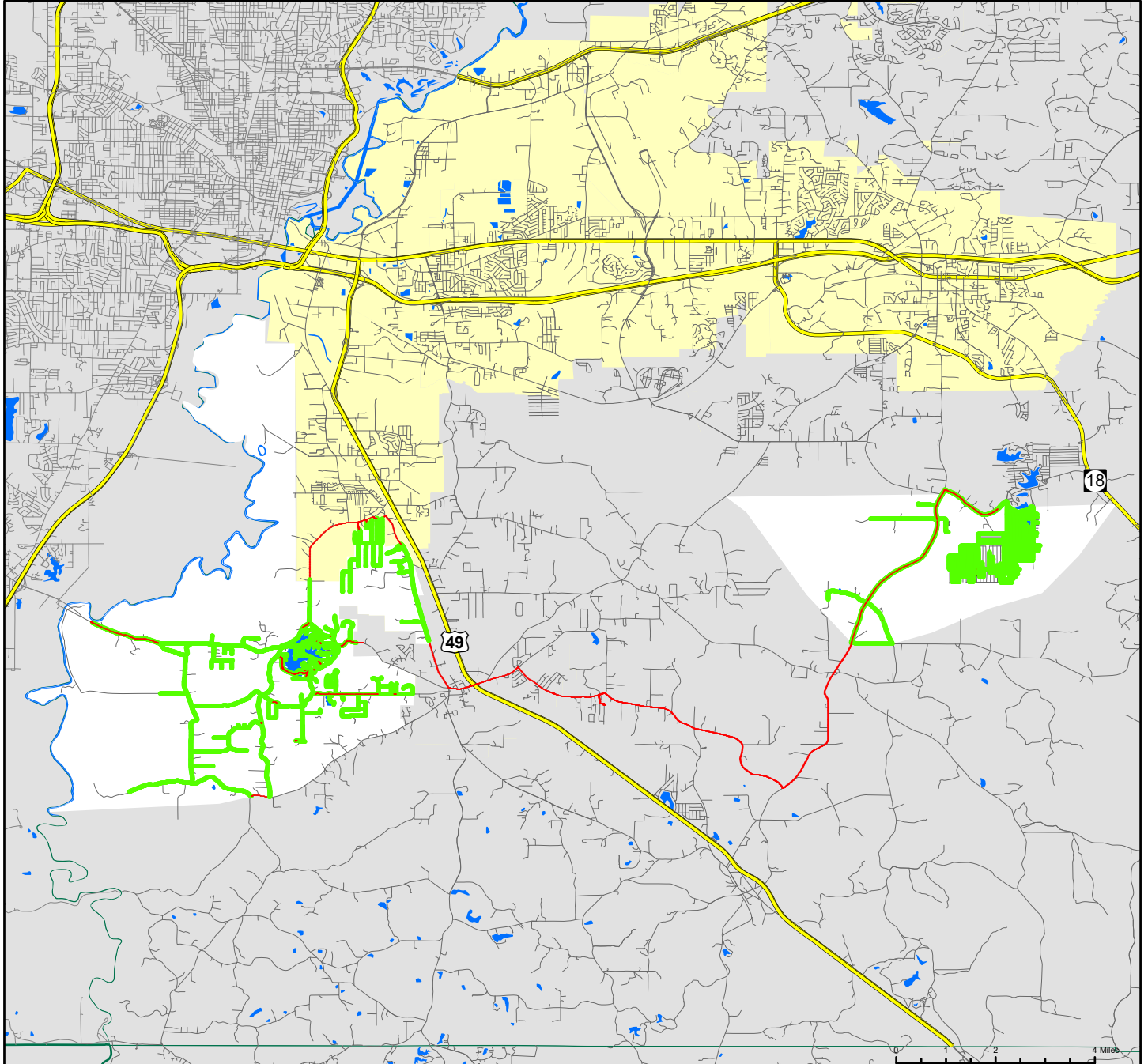
# Rankin County, Mississippi

Ground Adulticide Application Date:  
July 8, 2024

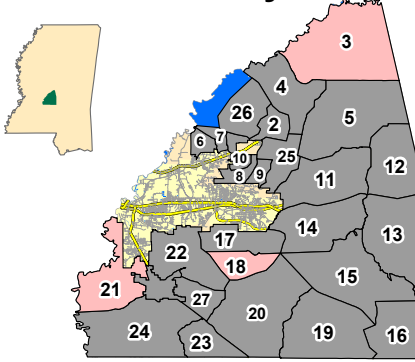
### Sprayer Status

- Sprayer Off
- Sprayer On

Chemical: Permanone 30-30  
Quantity Used: 20.3 gal  
Miles Treated: 86.3  
Acres Treated: 3,137.3



# Rankin County



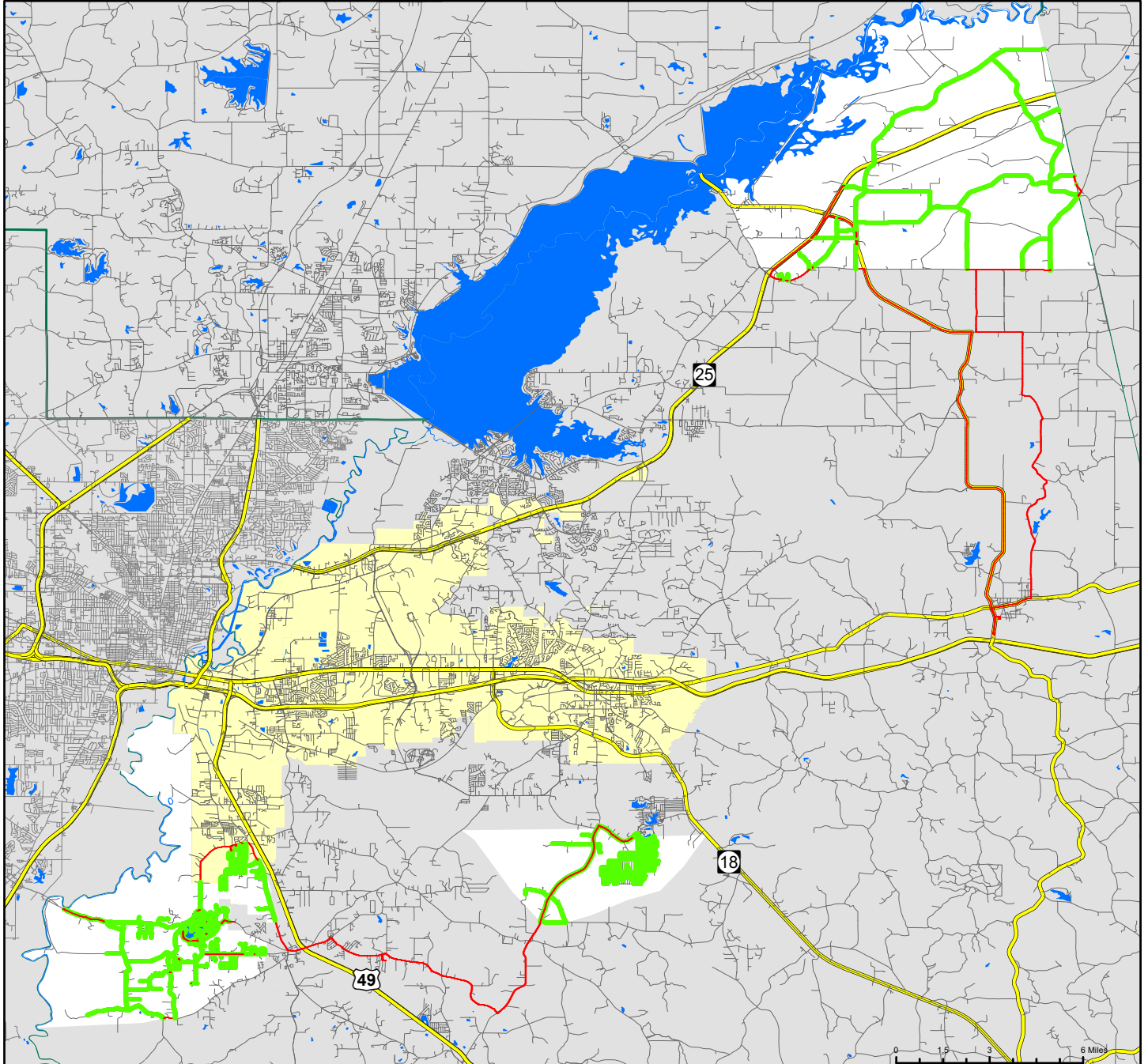
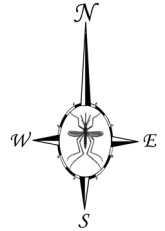
# Rankin County, Mississippi

Ground Adulticide Application Date:  
July 8, 2024

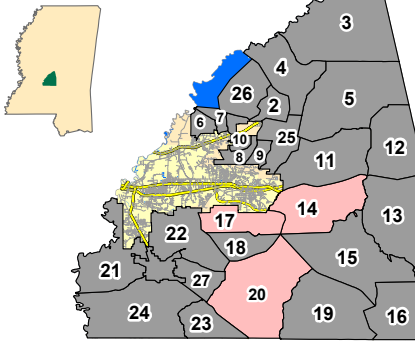
### Sprayer Status

- Sprayer Off
- Sprayer On

Chemical: Permanone 30-30  
Quantity Used: 27.8 gal  
Miles Treated: 128.4  
Acres Treated: 4,666.9



# Rankin County



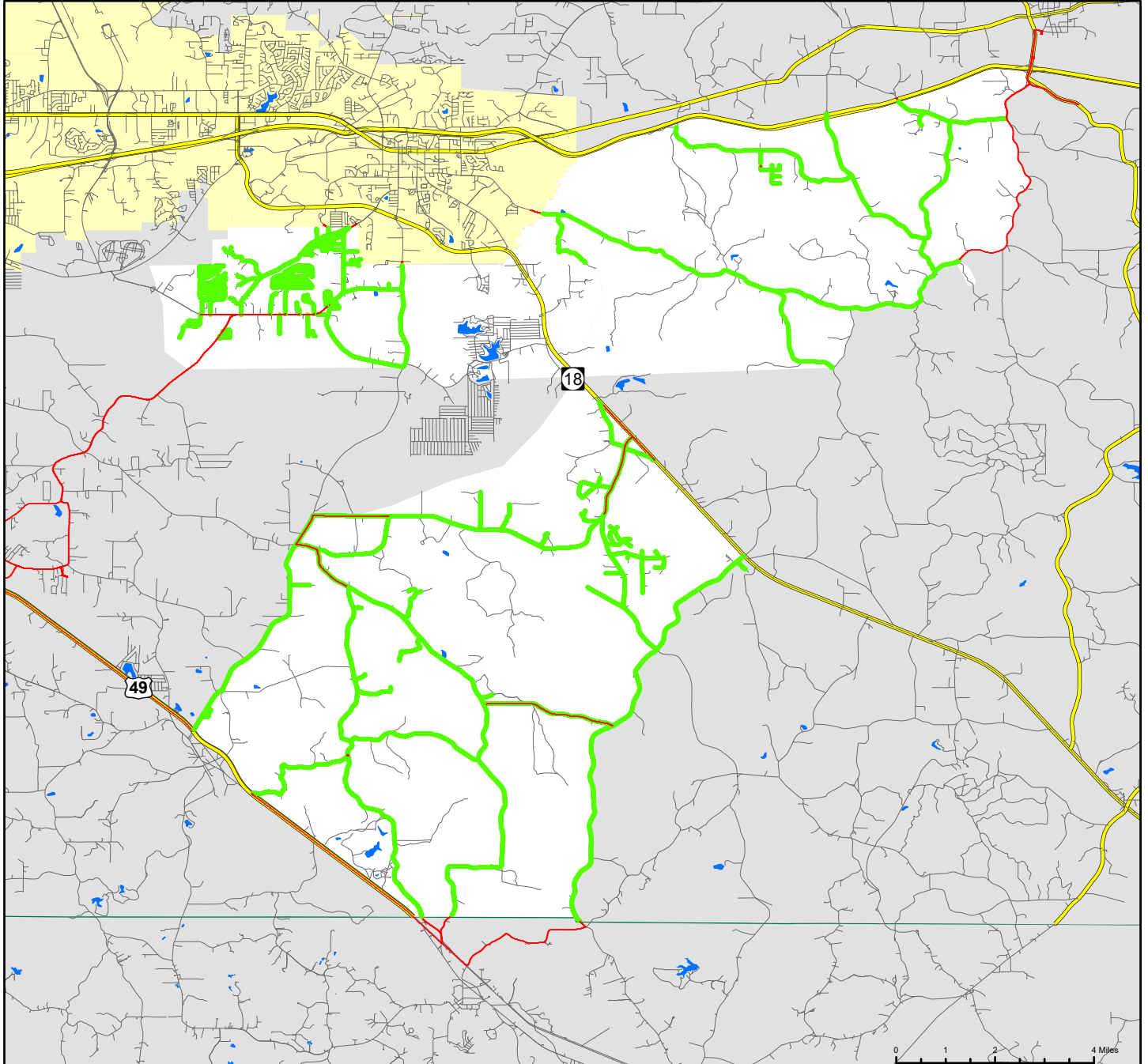
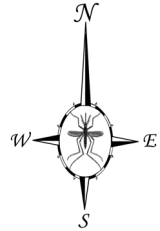
# Rankin County, Mississippi

Ground Adulticide Application Date:  
July 9, 2024

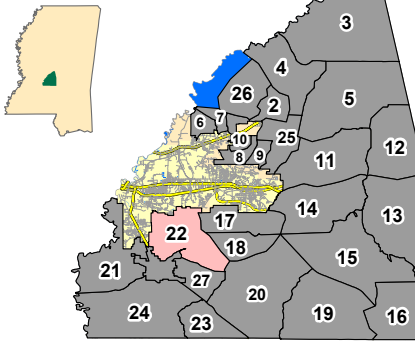
### Sprayer Status

- Sprayer Off
- Sprayer On

Chemical: Permanone 30-30  
Quantity Used: 28.8 gal  
Miles Treated: 129.8  
Acres Treated: 4,722.9



# Rankin County



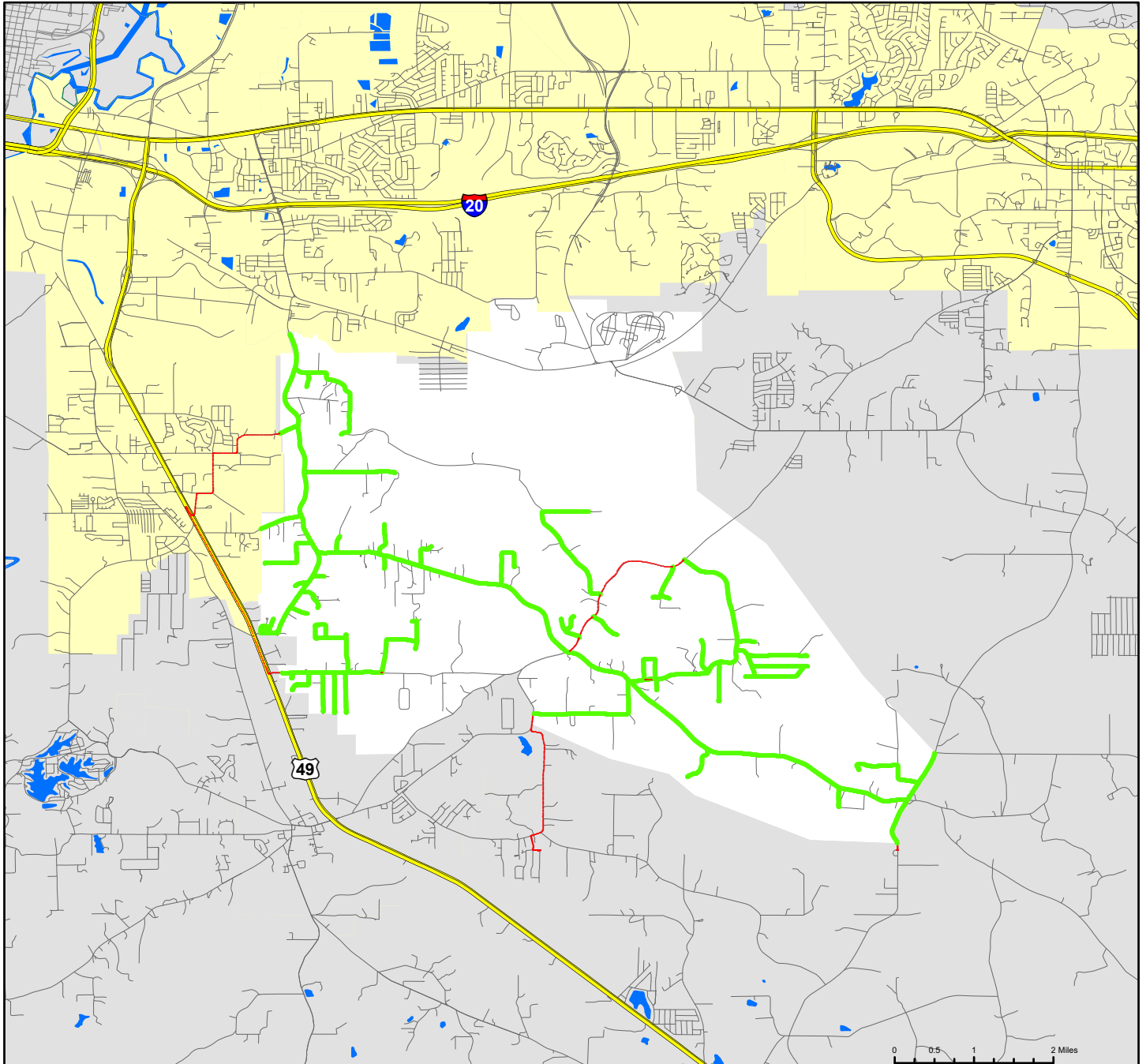
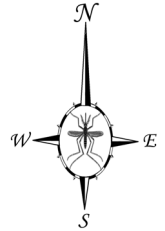
# Rankin County, Mississippi

Ground Adulticide Application Date:  
July 10, 2024

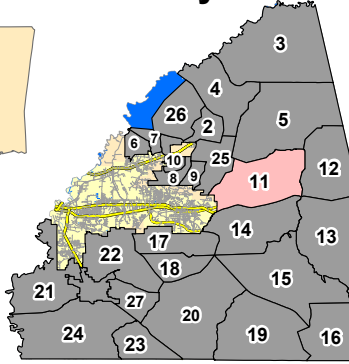
### Sprayer Status

- Sprayer Off
- Sprayer On

Chemical: Permanone 30-30  
Quantity Used: 10.2 gal  
Miles Treated: 39.3  
Acres Treated: 1,427.9



# Rankin County



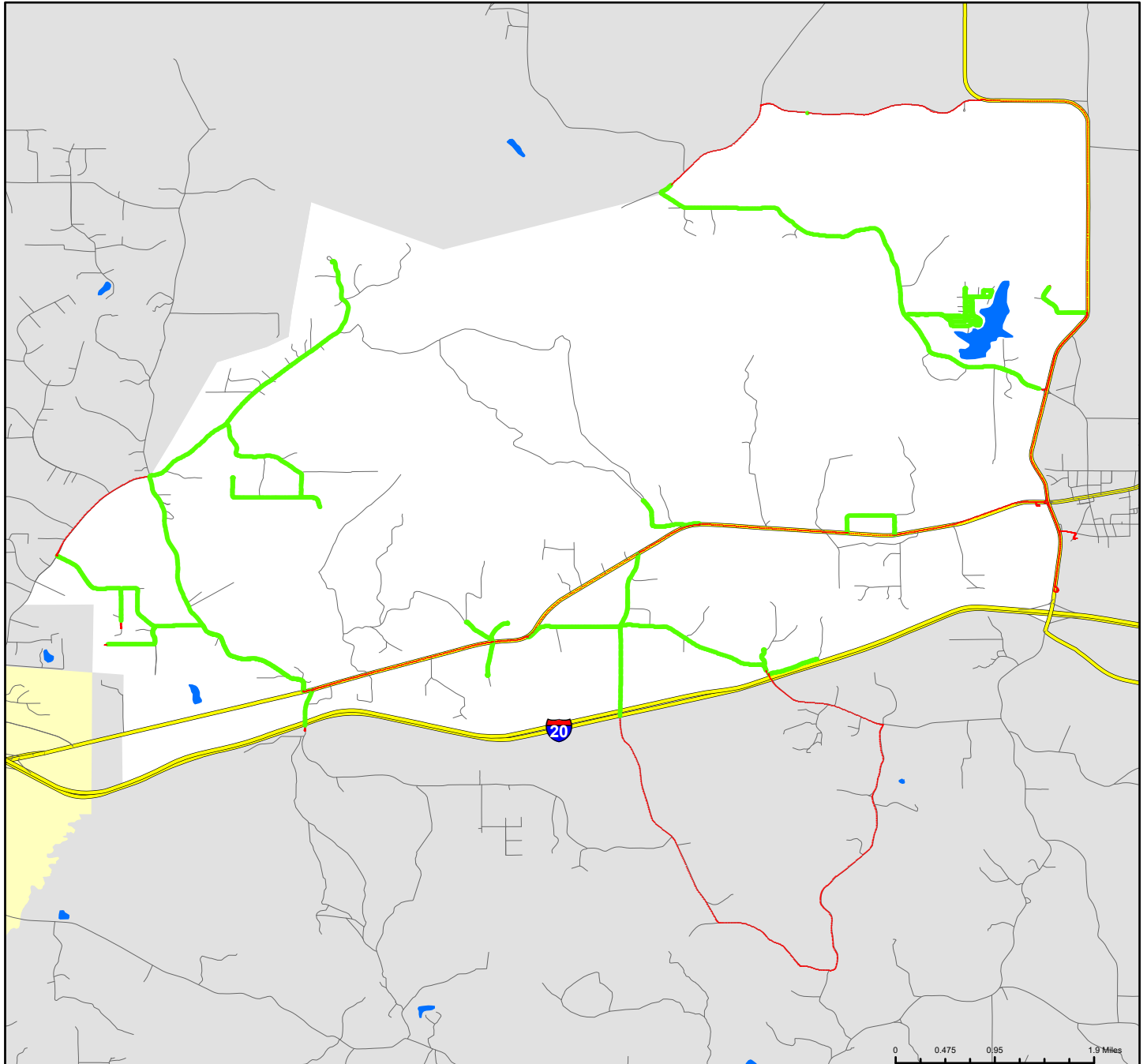
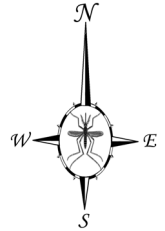
# Rankin County, Mississippi

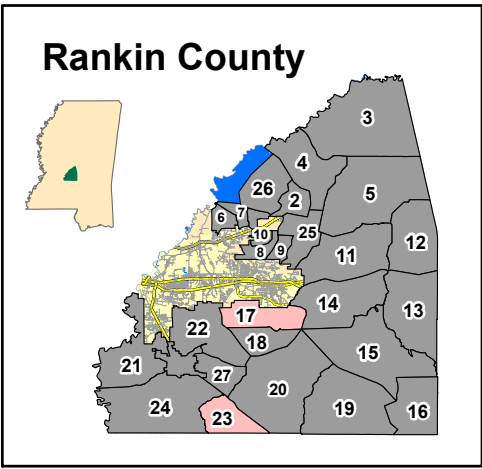
Ground Adulticide Application Date:  
July 10, 2024

### Sprayer Status

- Sprayer Off
- Sprayer On

Chemical: Permanone 30-30  
Quantity Used: 6.0 gal  
Miles Treated: 27.0  
Acres Treated: 981.0





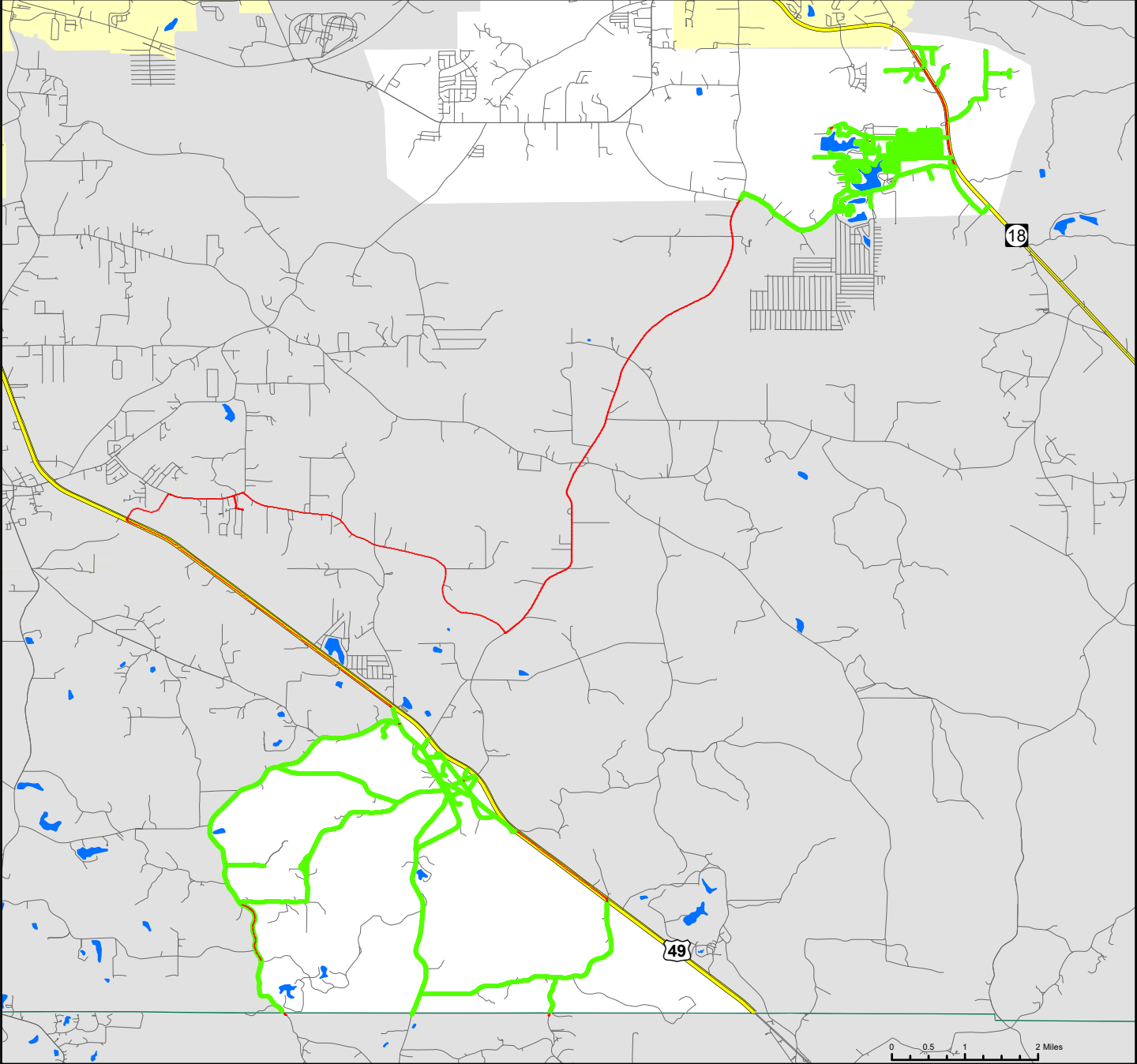
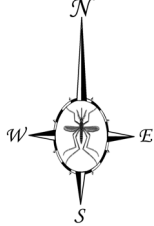
# Rankin County, Mississippi

Ground Adulticide Application Date:  
July 11, 2024

**Sprayer Status**

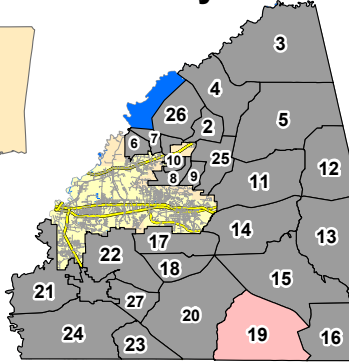
- Sprayer Off
- Sprayer On

Chemical: Permanone 30-30  
Quantity Used: 11.5 gal  
Miles Treated: 49.9  
Acres Treated: 1,814.0





# Rankin County



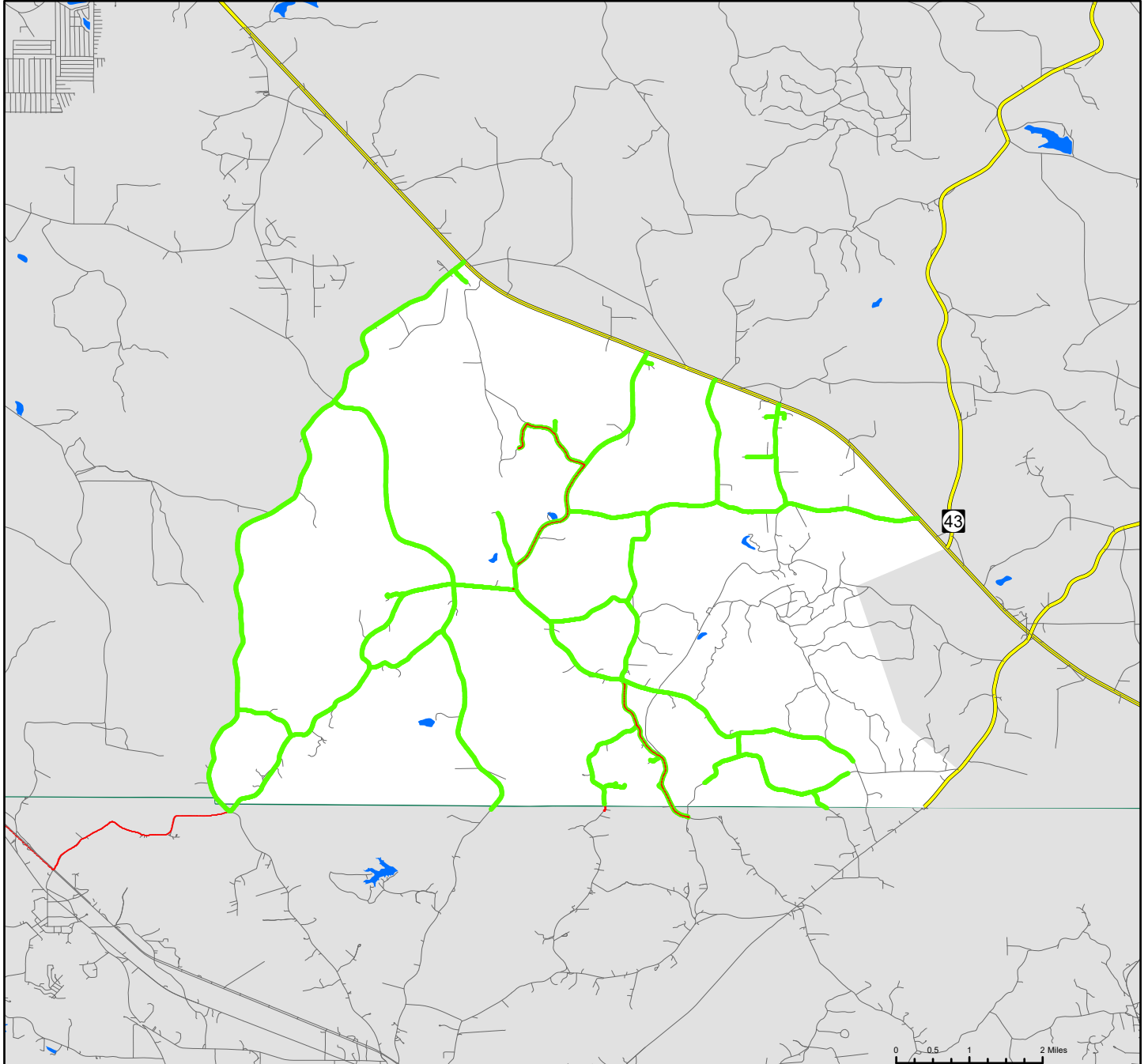
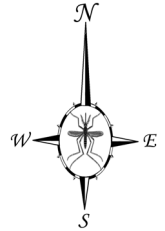
# Rankin County, Mississippi

Ground Adulticide Application Date:  
July 15, 2024

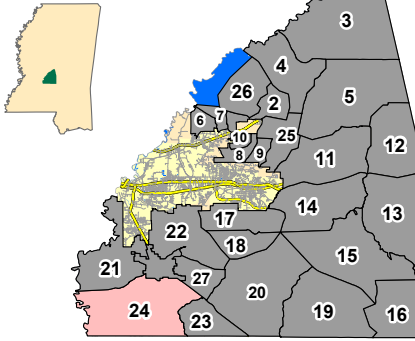
## Sprayer Status

- Sprayer Off
- Sprayer On

Chemical: Permanone 30-30  
Quantity Used: 12.3 gal  
Miles Treated: 52.8  
Acres Treated: 1,920.9



# Rankin County



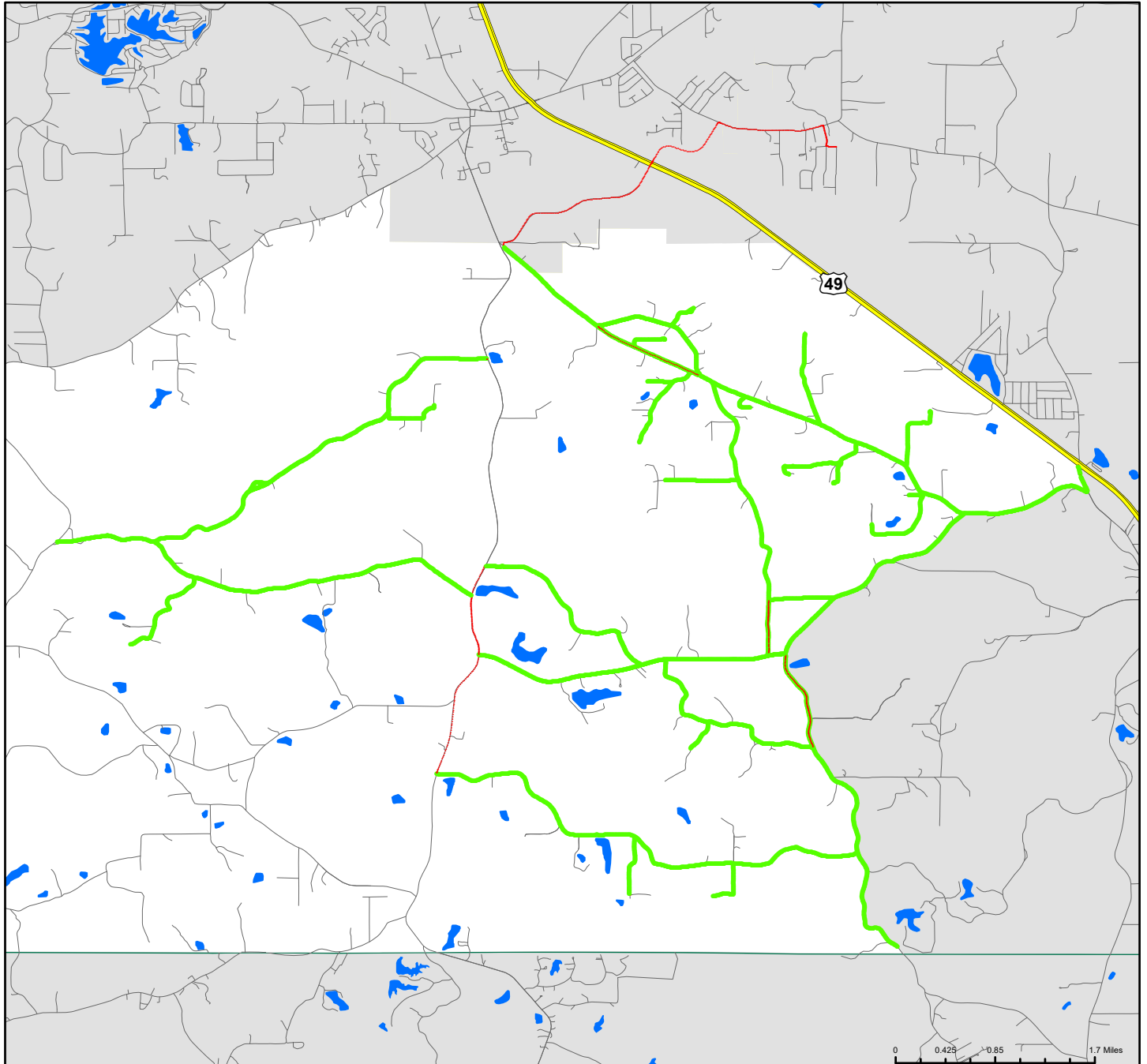
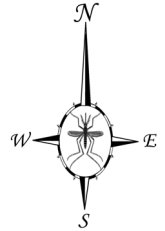
# Rankin County, Mississippi

Ground Adulticide Application Date:  
July 17, 2024

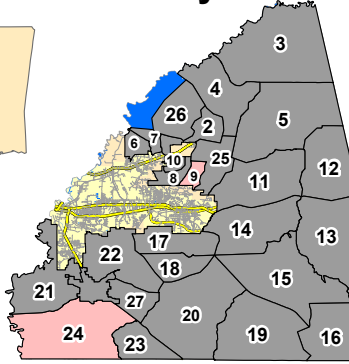
### Sprayer Status

- Sprayer Off
- Sprayer On

Chemical: Permanone 30-30  
Quantity Used: 9.2 gal  
Miles Treated: 37.9  
Acres Treated: 1,376.3



# Rankin County



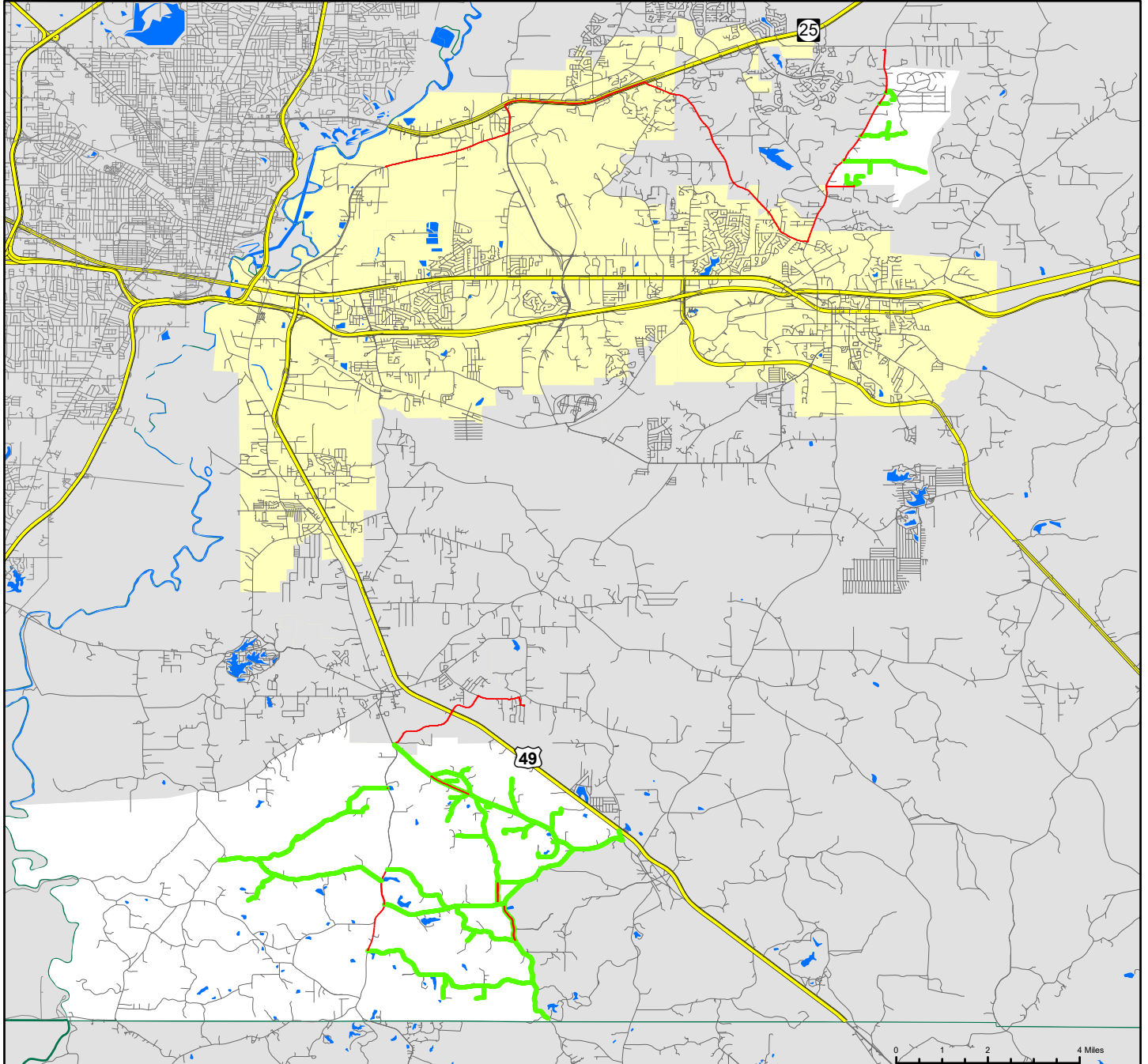
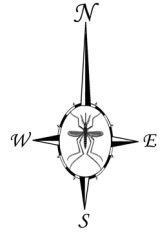
# Rankin County, Mississippi

Ground Adulticide Application Date:  
July 17, 2024

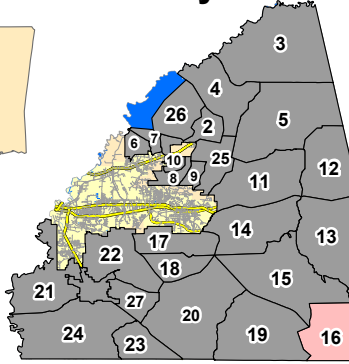
## Sprayer Status

- Sprayer Off
- Sprayer On

Chemical: Permanone 30-30  
Quantity Used: 10.2 gal  
Miles Treated: 42.2  
Acres Treated: 1,531.9



# Rankin County



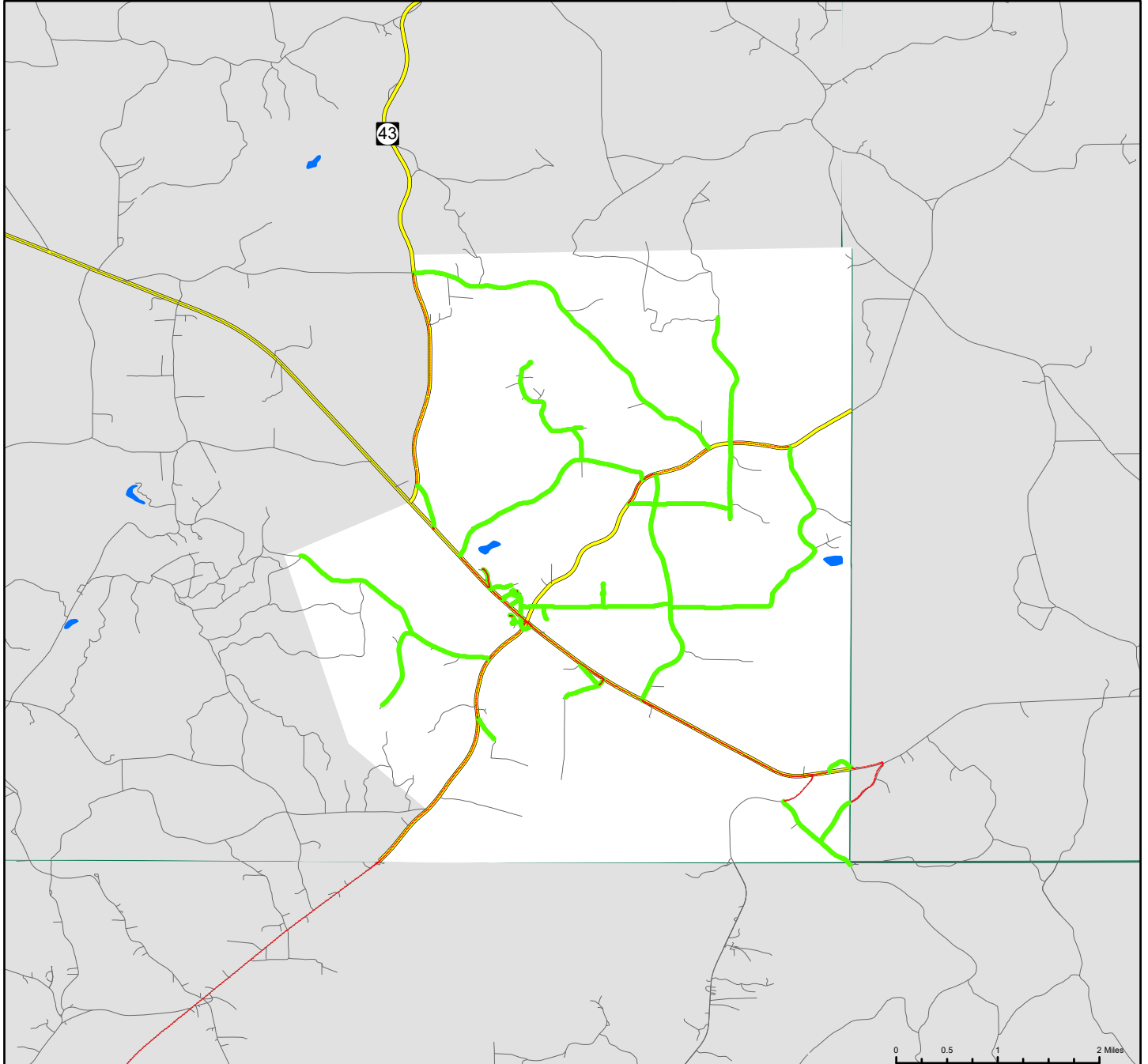
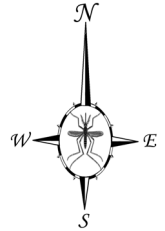
# Rankin County, Mississippi

Ground Adulticide Application Date:  
July 18, 2024

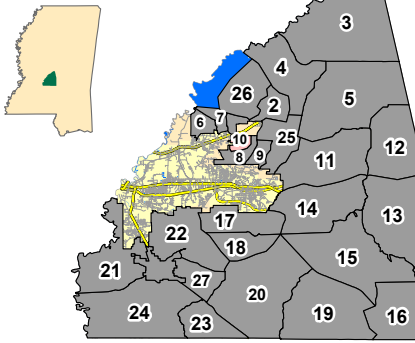
## Sprayer Status

- Sprayer Off
- Sprayer On

Chemical: Permanone 30-30  
Quantity Used: 5.5 gal  
Miles Treated: 23.7  
Acres Treated: 863.3



# Rankin County



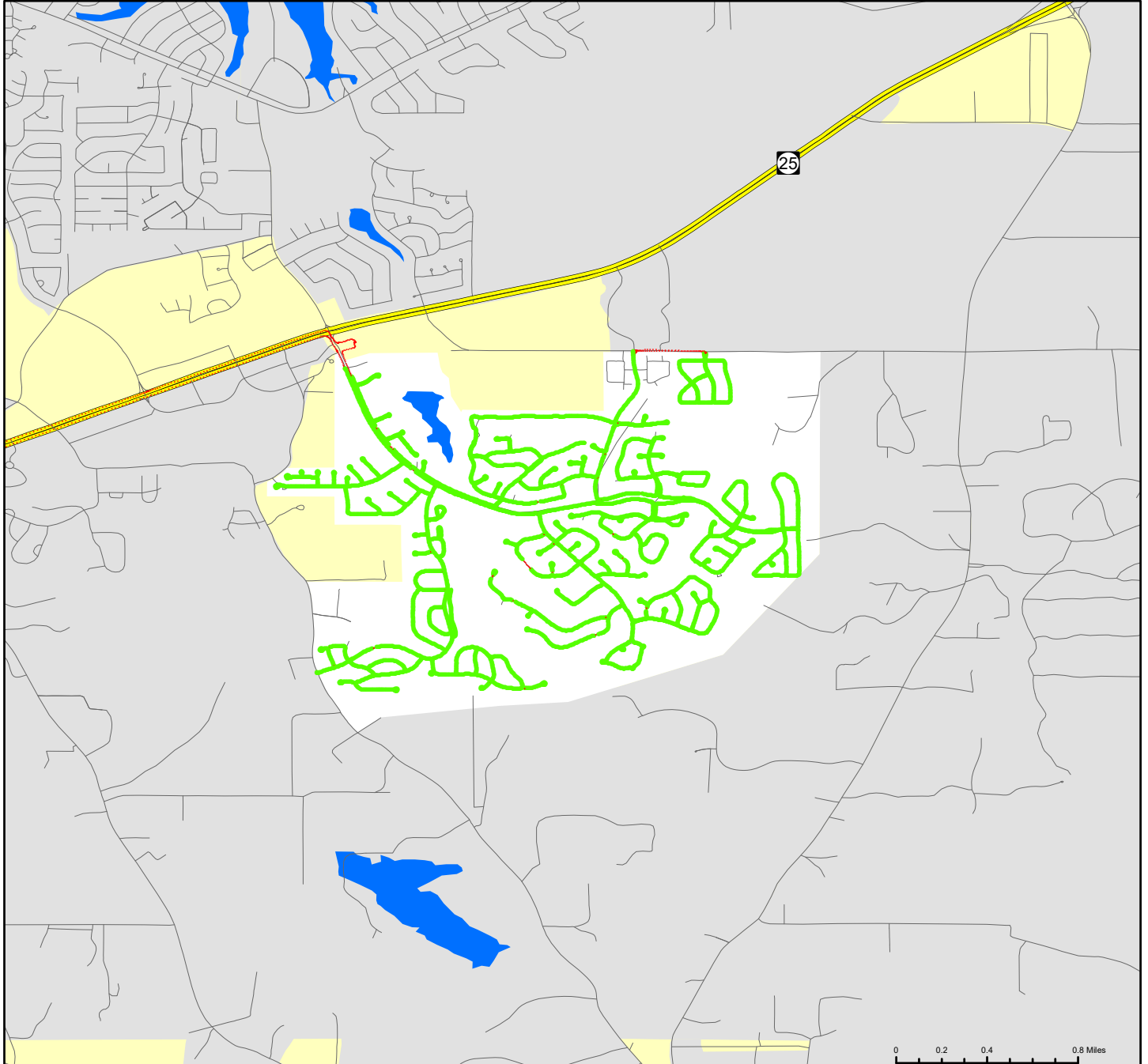
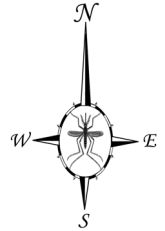
# Rankin County, Mississippi

Ground Adulticide Application Date:  
July 18, 2024

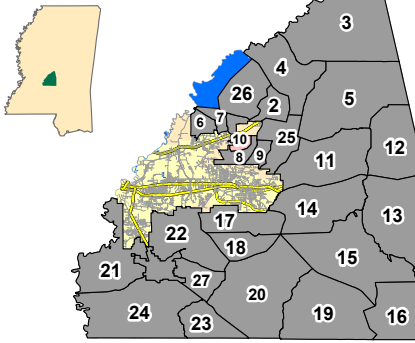
### Sprayer Status

- Sprayer Off
- Sprayer On

Chemical: Permanone 30-30  
Quantity Used: 6.8 gal  
Miles Treated: 29.4  
Acres Treated: 1,070.1



# Rankin County



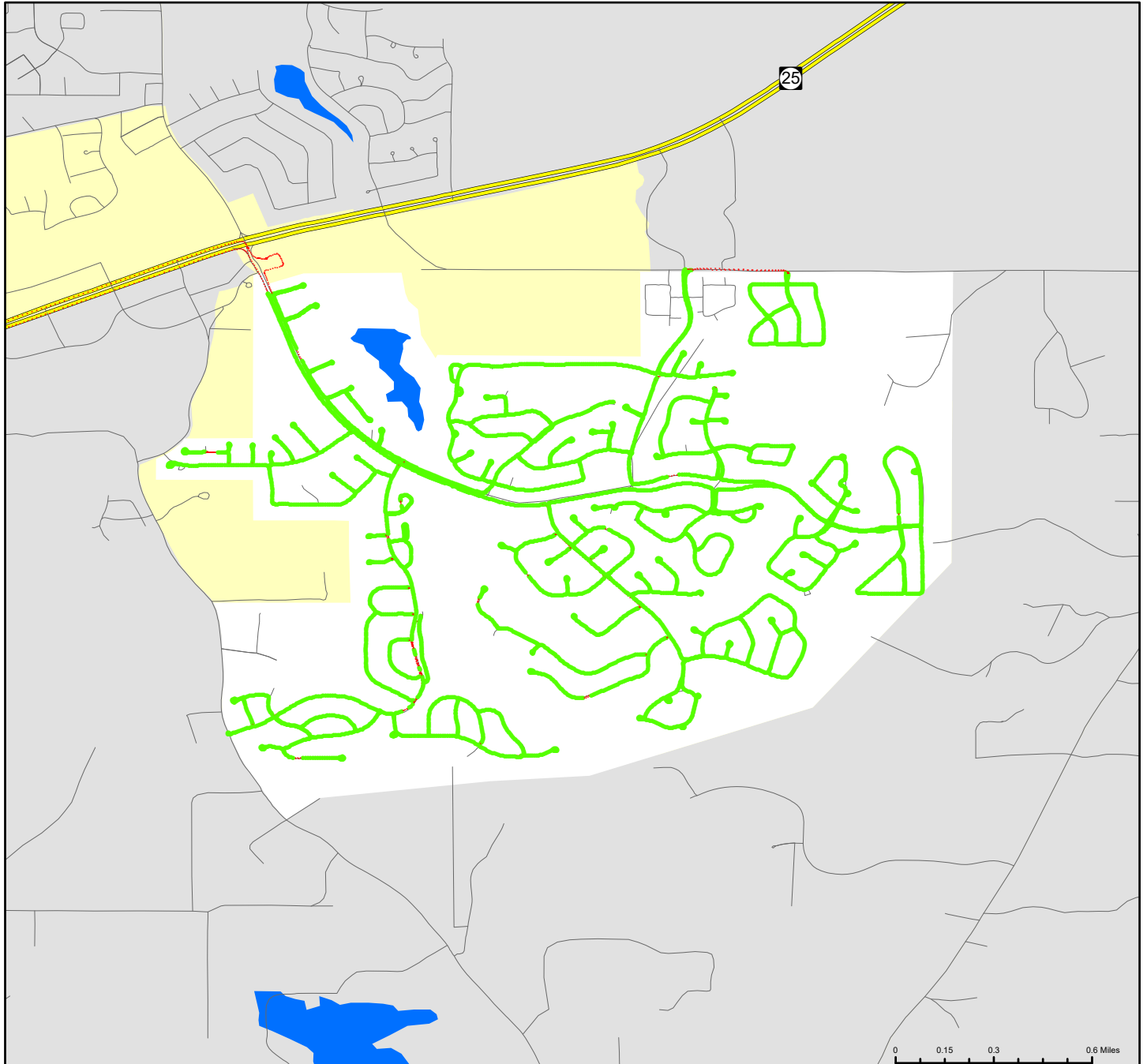
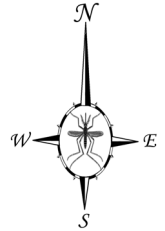
# Rankin County, Mississippi

Ground Adulticide Application Date:  
July 25, 2024

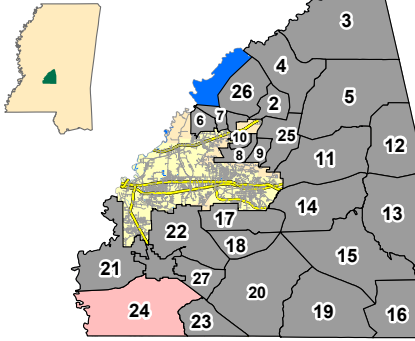
### Sprayer Status

- Sprayer Off
- Sprayer On

Chemical: Permanone 30-30  
Quantity Used: 7.1 gal  
Miles Treated: 29.9  
Acres Treated: 1,085.6



# Rankin County



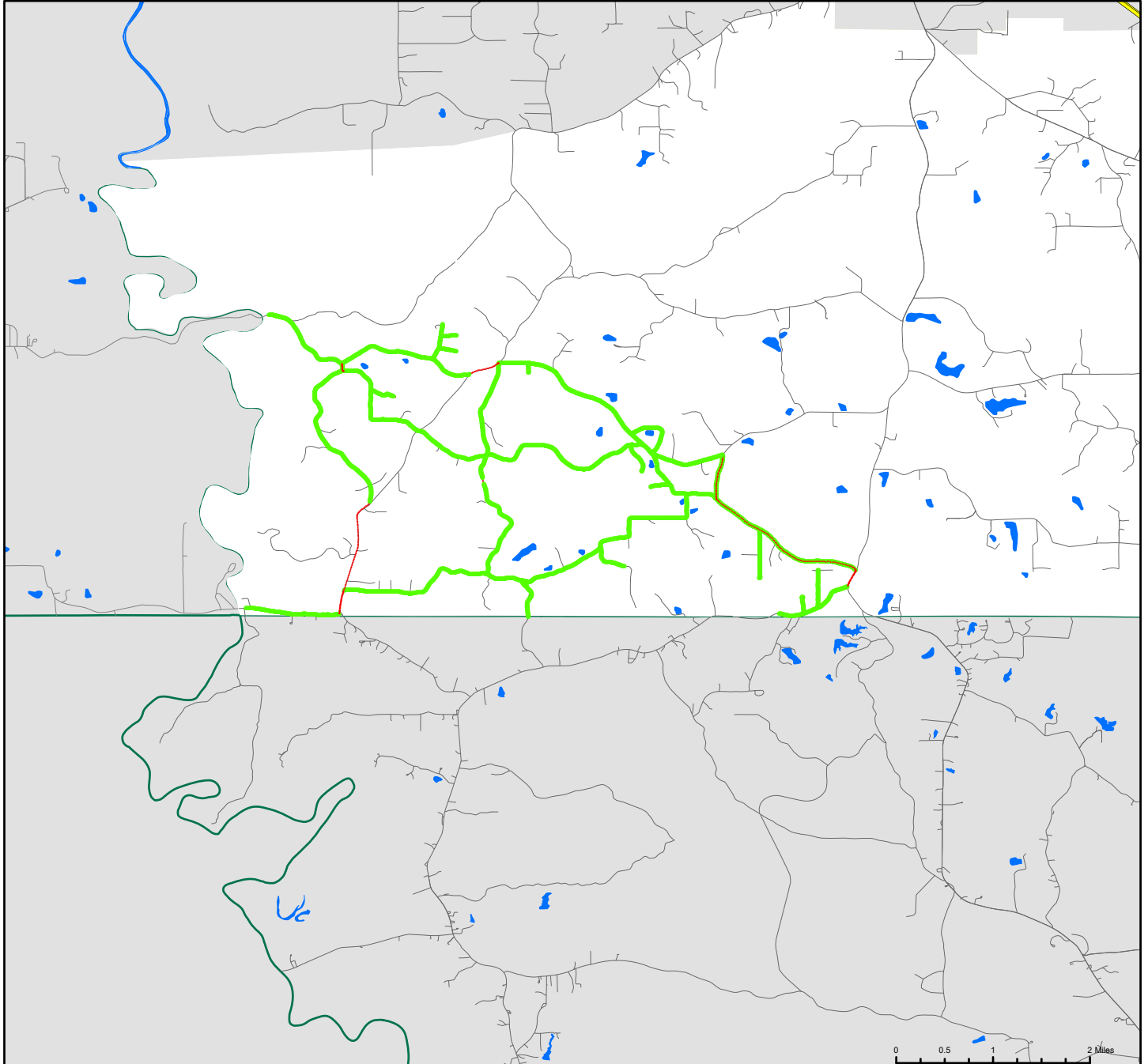
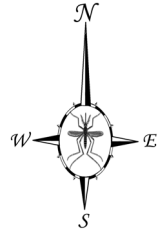
# Rankin County, Mississippi

Ground Adulticide Application Date:  
July 29, 2024

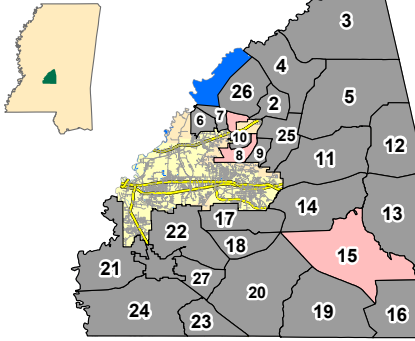
### Sprayer Status

- Sprayer Off
- Sprayer On

Chemical: Permanone 30-30  
Quantity Used: 5.6 gal  
Miles Treated: 24.2  
Acres Treated: 880.9



# Rankin County



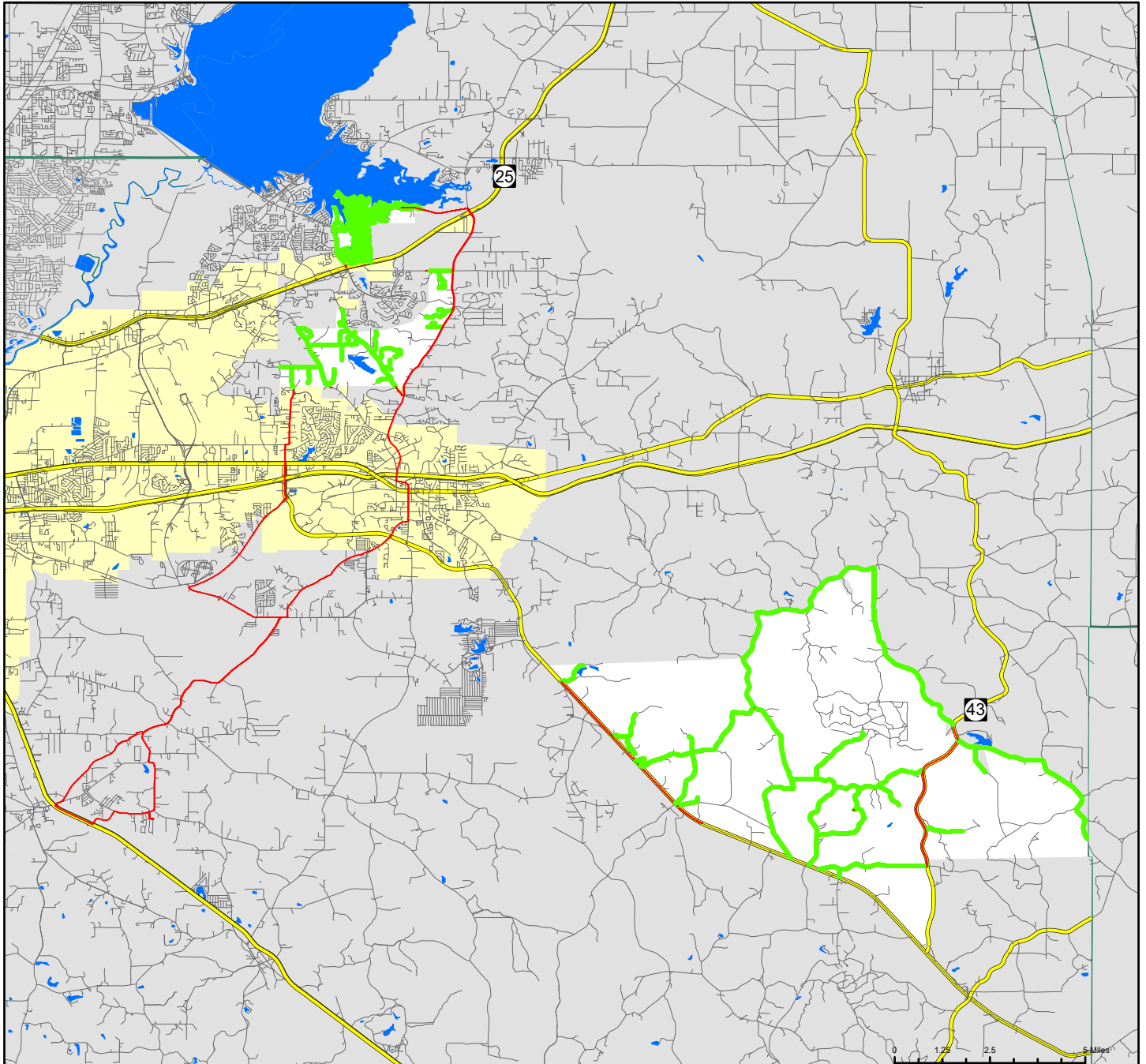
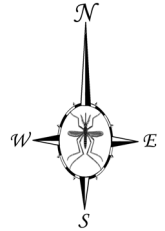
# Rankin County, Mississippi

Ground Adulticide Application Date:  
July 30, 2024

### Sprayer Status

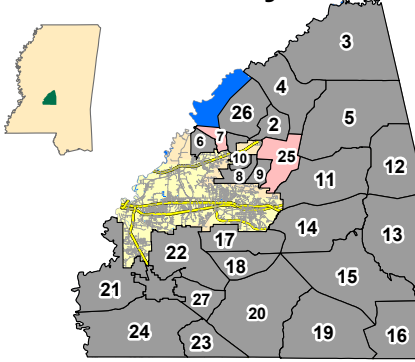
- Sprayer Off
- Sprayer On

Chemical: Permanone 30-30  
Quantity Used: 20.1 gal  
Miles Treated: 86.9  
Acres Treated: 3,158.1





# Rankin County



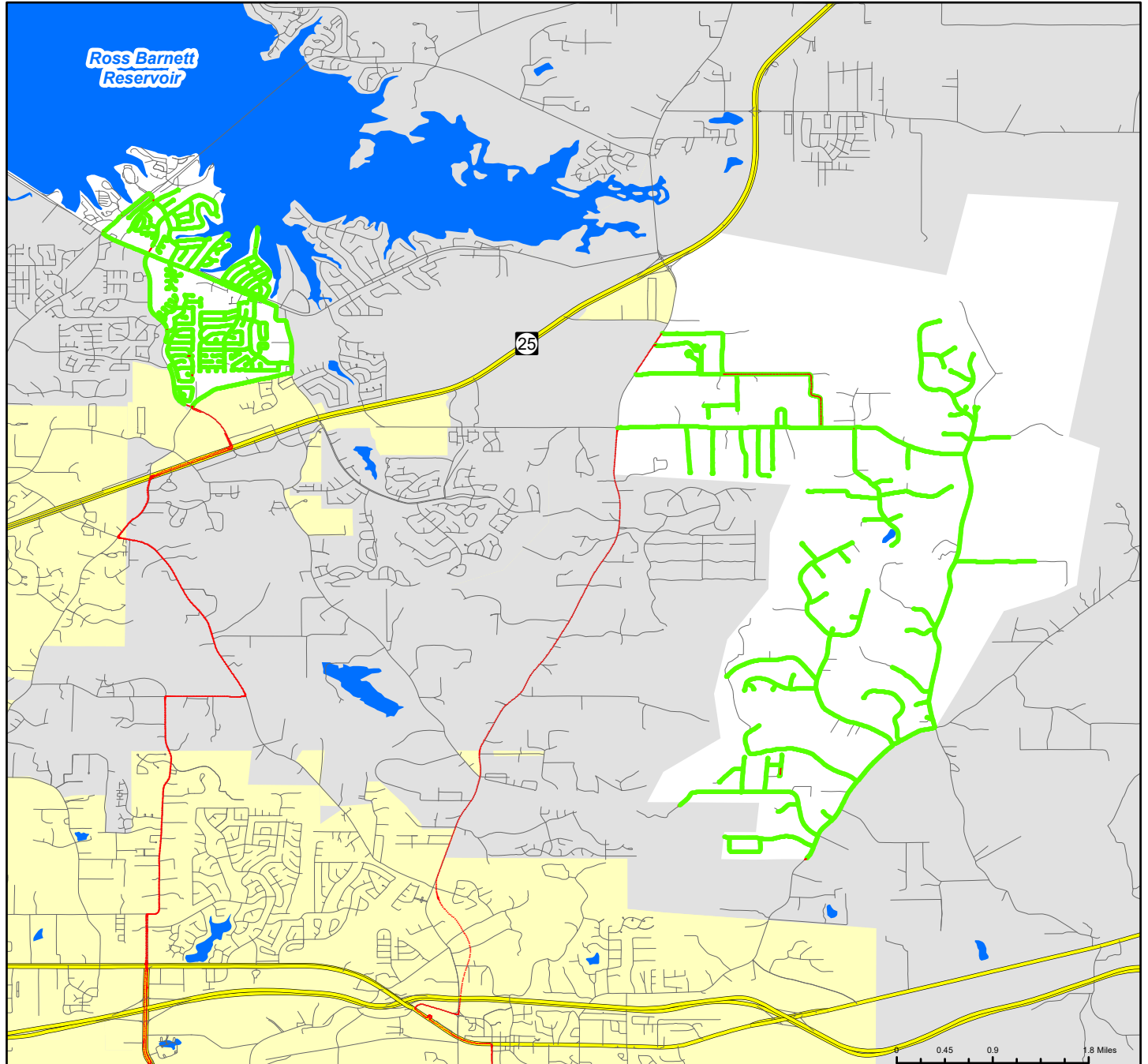
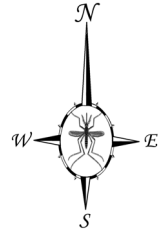
# Rankin County, Mississippi

Ground Adulticide Application Date:  
July 31, 2024

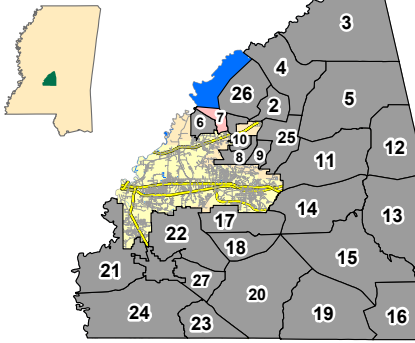
### Sprayer Status

- Sprayer Off
- Sprayer On

Chemical: Permanone 30-30  
Quantity Used: 14.7 gal  
Miles Treated: 63.0  
Acres Treated: 2,290.4



# Rankin County



# Rankin County, Mississippi

Ground Adulticide Application Date:  
July 31, 2024

### Sprayer Status

- Sprayer Off
- Sprayer On

Chemical: Permanone 30-30  
Quantity Used: 6.5 gal  
Miles Treated: 27.7  
Acres Treated: 1,006.8

